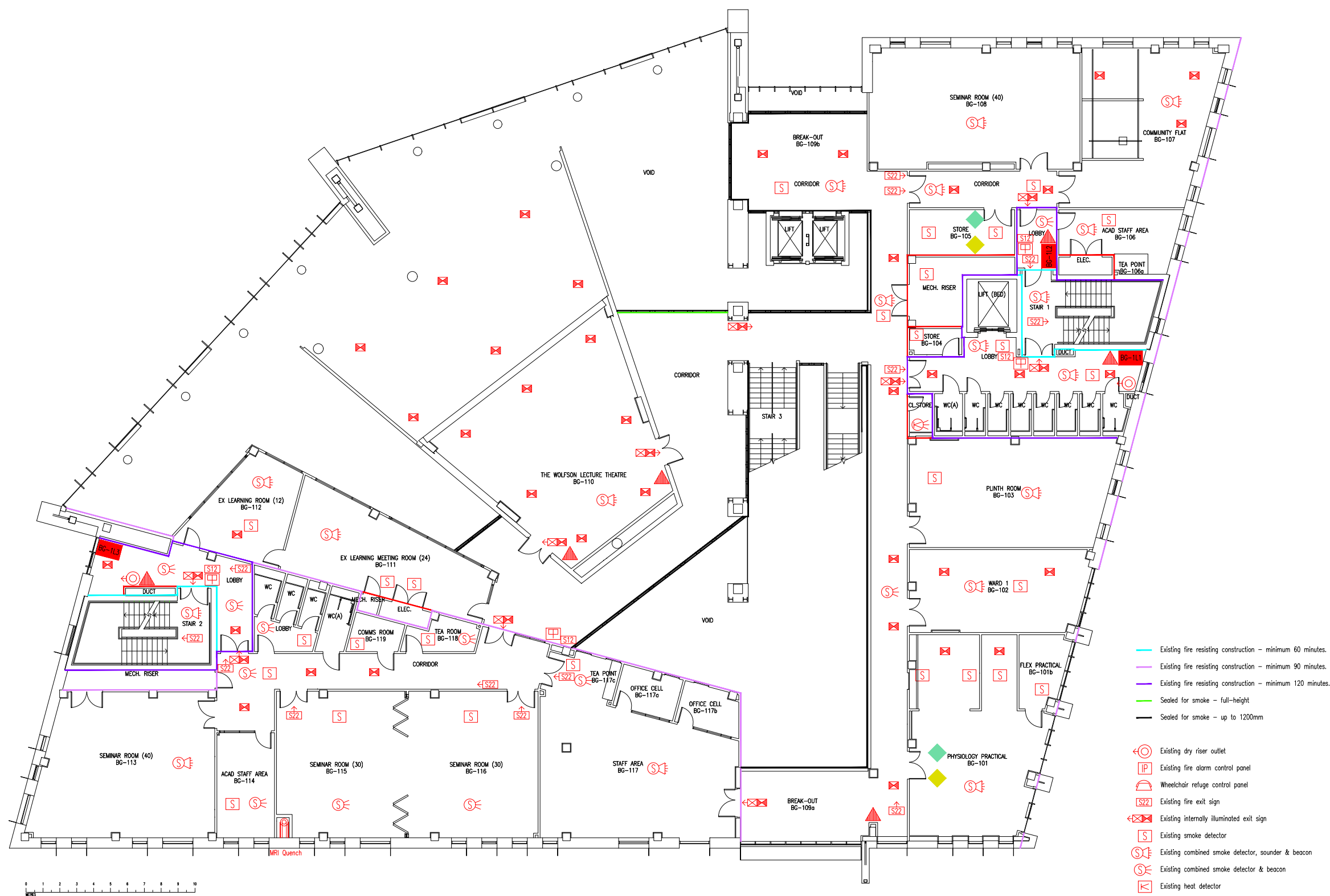


DATE	REVISION
A 18.11.21	GAS CYLINDERS ADDED.
B 31.1.23	BG-101 & BG-101a COMBINED.



THIS FIRE SAFETY PLAN IS GENERALLY BASED ON INFORMATION PROVIDED IN THE ARCHITECT'S DRAWINGS. IT IS THE RESPONSIBILITY OF ALL USERS OF THIS PLAN TO CHECK THE INFORMATION PROVIDED TO CONFIRM THE EXACT POSITIONS OF THE FIRE SAFETY EQUIPMENT, CAVITY BARRIERS ETC.

FIRST FLOOR
FIRE EQUIPMENT
PLAN

BOURNEMOUTH
GATEWAY BUILDING

BGB/FP/2B

SCALE 1:250 at A3
8th JUNE 2021

- Existing fire resisting construction - minimum 60 minutes.
- Existing fire resisting construction - minimum 90 minutes.
- Existing fire resisting construction - minimum 120 minutes.
- Sealed for smoke - full-height
- Sealed for smoke - up to 1200mm
- ⊙ Existing dry riser outlet
- IP Existing fire alarm control panel
- ♿ Wheelchair refuge control panel
- S22 Existing fire exit sign
- ⊠ Existing internally illuminated exit sign
- S Existing smoke detector
- ⊙ Existing combined smoke detector, sounder & beacon
- ⊙ Existing combined smoke detector & beacon
- ⊙ Existing heat detector
- ⊙ Existing combined heat detector, sounder & beacon
- ⊙ Existing combined heat detector & beacon
- ⊠ Existing emergency lighting luminaire
- A1A Existing wheelchair refuge zone
- ▲ Existing 6 litre P50 foam fire extinguisher
- ⊠ Existing manual call point
- S22 Existing fire action sign
- ◆ Existing entonox gas cylinders
- ◆ Existing oxygen gas cylinders

