








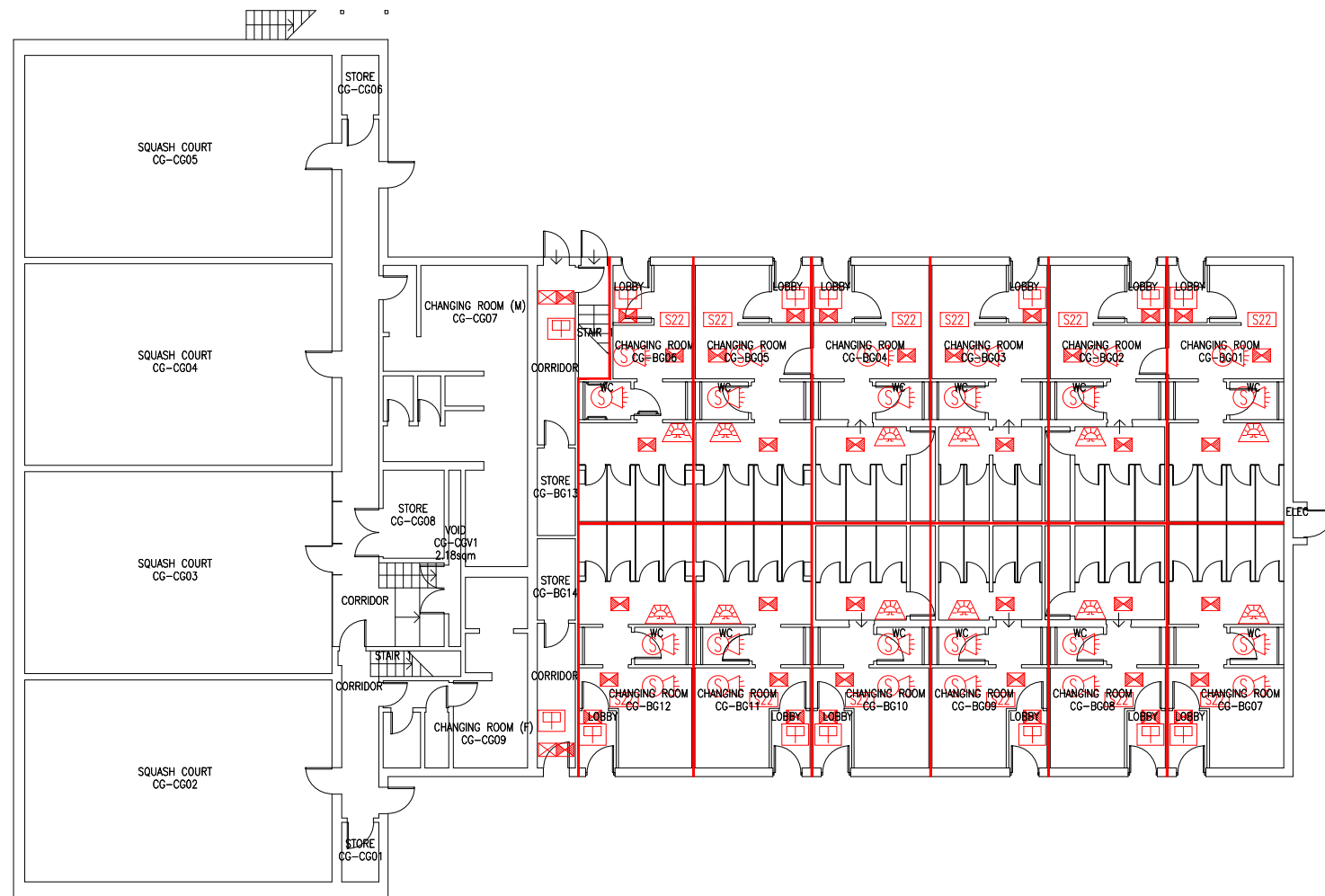


DATE	REVISION
A 22.11.23	UPDATE TO CHANGING ROOM AREA FOLLOWING REFURBISHMENT.

-  Existing fire resisting construction - minimum 30 minutes.
-  Existing internally illuminated exit sign
-  Existing emergency lighting luminaire
-  Existing fire exit sign
-  Directional arrow on existing fire exit sign
-  Existing manual call point
-  Existing audible warning device
-  Existing sounder & beacon
-  Existing combined smoke detector, sounder & beacon



THIS FIRE SAFETY PLAN IS GENERALLY BASED ON INFORMATION PROVIDED BY BU'S FIRE SAFETY OFFICER. IT IS THE RESPONSIBILITY OF ALL USERS OF THIS PLAN TO CHECK THE INFORMATION PROVIDED TO CONFIRM THE EXACT POSITIONS OF THE FIRE SAFETY EQUIPMENT, CAVITY BARRIERS ETC.

GROUND FLOOR FIRE PLAN

CHAPELGATE:
CHANGING ROOMS
(BUILDING B) &
SQUASH COURTS
(BUILDING C)

CG-B/FP/1A

SCALE 1:200 at A3
3rd JULY 2019

