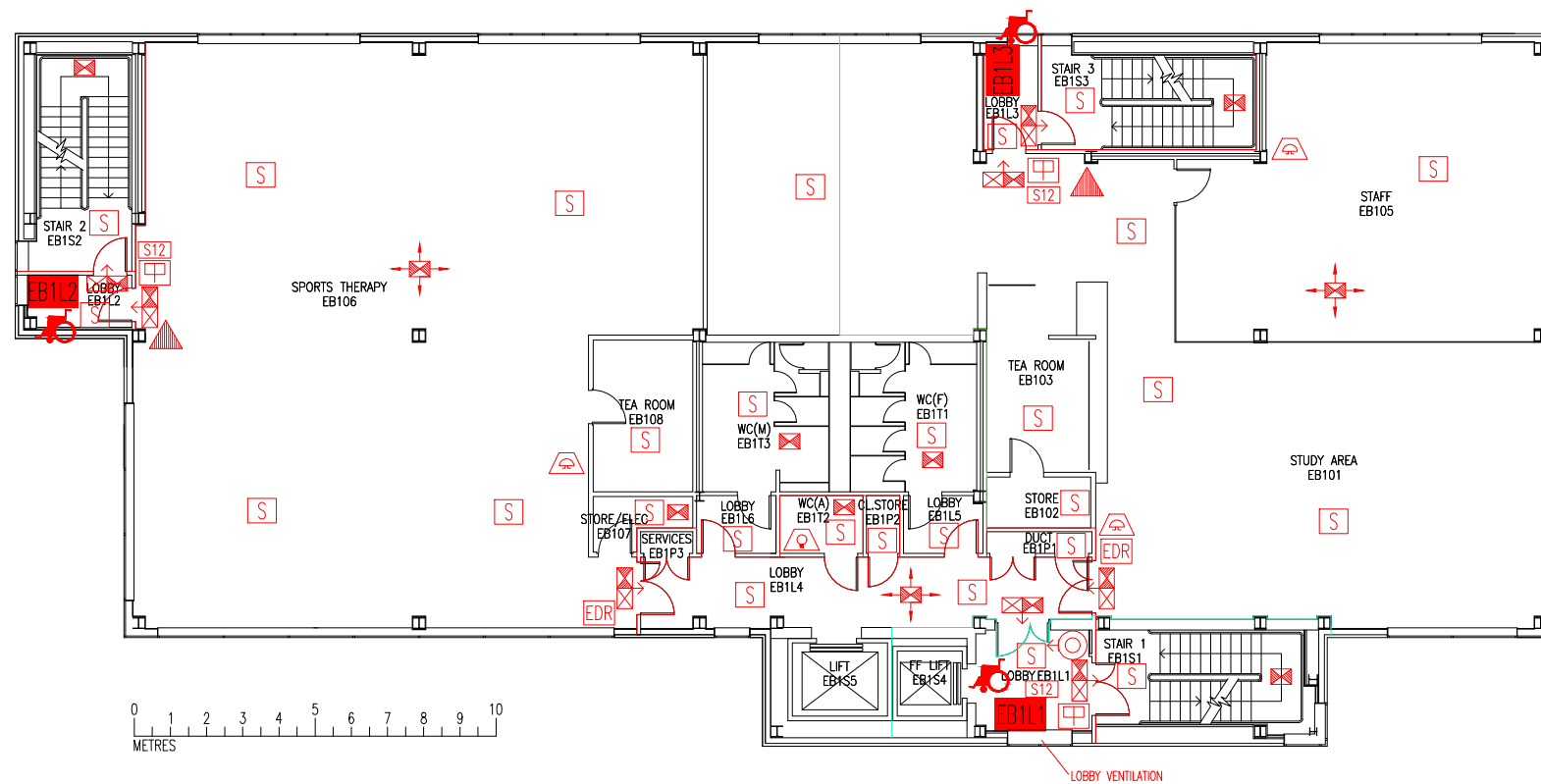


DATE	REVISION
A 19.8.10	UPDATE FOLLOWING FORMATION OF EB105
B 11.4.14	EB103 CHANGED TO TEA ROOM
C 22.9.16	EXTINGUISHER POSITIONS & TYPES UPDATED
D 4.8.21	'TEA ROOM' NUMBERED EB10a
E 22.11.22	UPDATE FOLLOWING WORK TO FORM EB106. ROOMS RENUMBERED.



- EB1L1 Existing wheelchair refuge zone
- Existing Evac chair
- Existing 30-minute fire resisting construction
- Existing 2-hour fire resisting partition
- Existing 30-minute fire resisting cavity barrier in ceiling & floor
- Existing dry riser outlet
- Existing audible warning device
- Existing visual warning device
- Existing 6 litre P50 foam fire extinguisher
- Existing call point – manual
- Existing smoke detector
- Existing exit sign – internally illuminated
- Existing emergency lighting luminaire
- Existing emergency door release call point – manual
- Existing fire action sign – general
- Denotes directional arrow on existing fire exit sign
- Area covered by existing emergency lighting

THIS FIRE SAFETY PLAN IS GENERALLY BASED ON INFORMATION PROVIDED BY BU'S FIRE SAFETY OFFICER. IT IS THE RESPONSIBILITY OF ALL USERS OF THIS PLAN TO CHECK THE INFORMATION PROVIDED TO CONFIRM THE EXACT POSITIONS OF THE FIRE SAFETY EQUIPMENT, CAVITY BARRIERS ETC.

FIRST FLOOR FIRE EQUIPMENT PLAN

EXECUTIVE BUSINESS
CENTRE

EB/FP/2E

SCALE 1:200 at A3
NOVEMBER 2009

