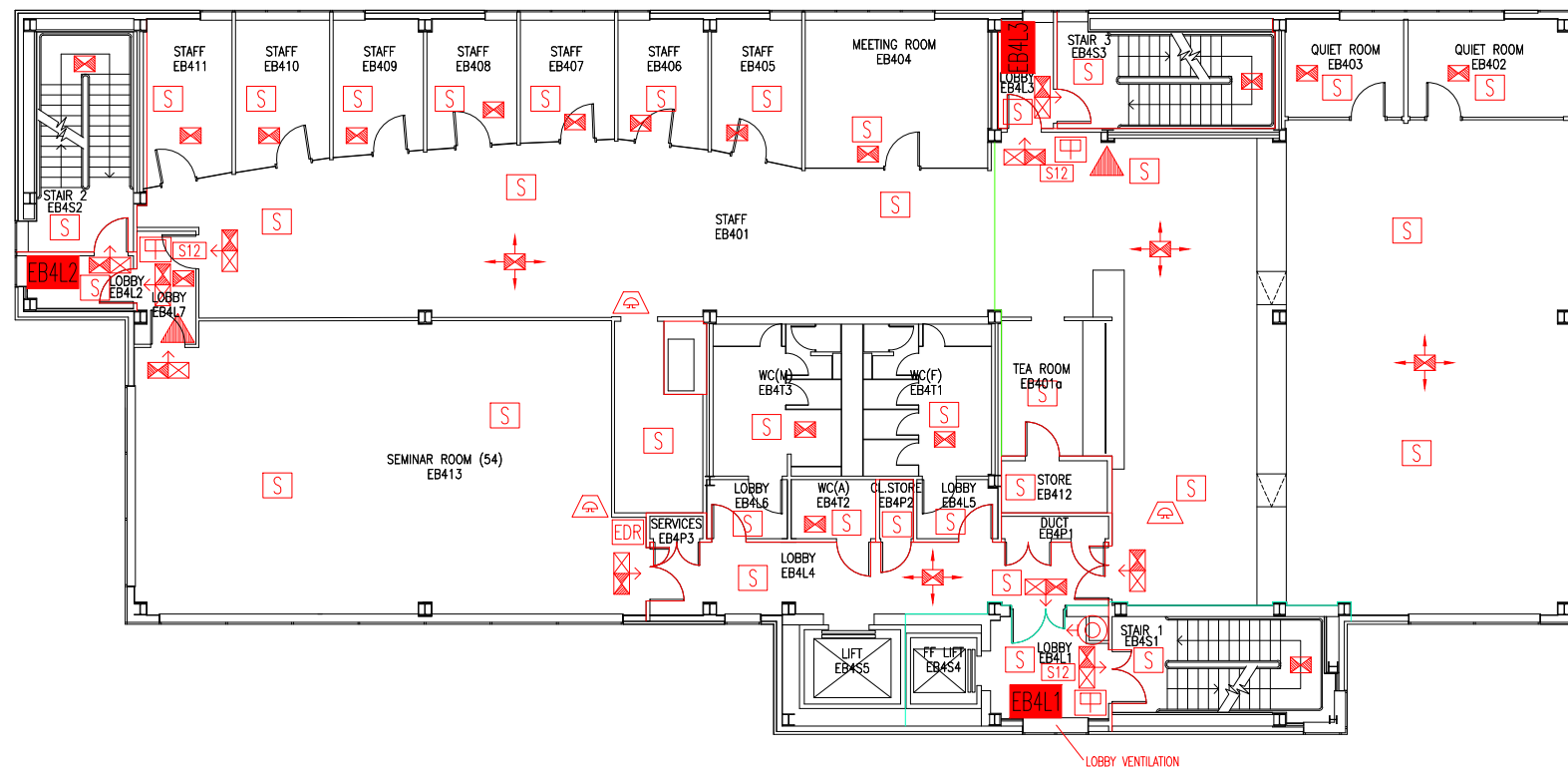


DATE	REVISION
A 3.8.10	PLAN UPDATED FOLLOWING WORKS TO FORM ROOMS EB404-411
B 22.9.16	EXTINGUISHER POSITIONS & TYPES UPDATED
C 7.5.21	'TEA ROOM' NUMBERED EB401a
D 31.8.23	UPDATE FOLLOWING WORKS TO FORM EB413.



THIS FIRE SAFETY PLAN IS GENERALLY BASED ON INFORMATION PROVIDED BY BU'S FIRE SAFETY OFFICER. IT IS THE RESPONSIBILITY OF ALL USERS OF THIS PLAN TO CHECK THE INFORMATION PROVIDED TO CONFIRM THE EXACT POSITIONS OF THE FIRE SAFETY EQUIPMENT, CAVITY BARRIERS ETC.

FOURTH FLOOR FIRE EQUIPMENT PLAN

EXECUTIVE BUSINESS CENTRE

EB/FP/5D

SCALE 1:200 at A3
NOVEMBER 2009

- EB4L Existing wheelchair refuge zone
- Existing 30-minute fire resisting construction
- Existing 2-hour fire resisting partition
- Existing 30-minute fire resisting cavity barrier in ceiling & floor void
- ⊙ Existing dry riser outlet
- ⊗ Existing exit sign - internally illuminated
- ← Denotes directional arrow on existing fire exit sign
- ▲ Existing 6 litre P50 foam fire extinguisher
- ☐ Existing call point - manual
- S Existing smoke detector
- ⚠ Existing audible warning device
- EDR Existing emergency door release call point - manual
- S12 Existing fire action sign - general
- ⊗ Existing emergency lighting luminaire - self contained
- ⊗ Area covered by existing emergency lighting

