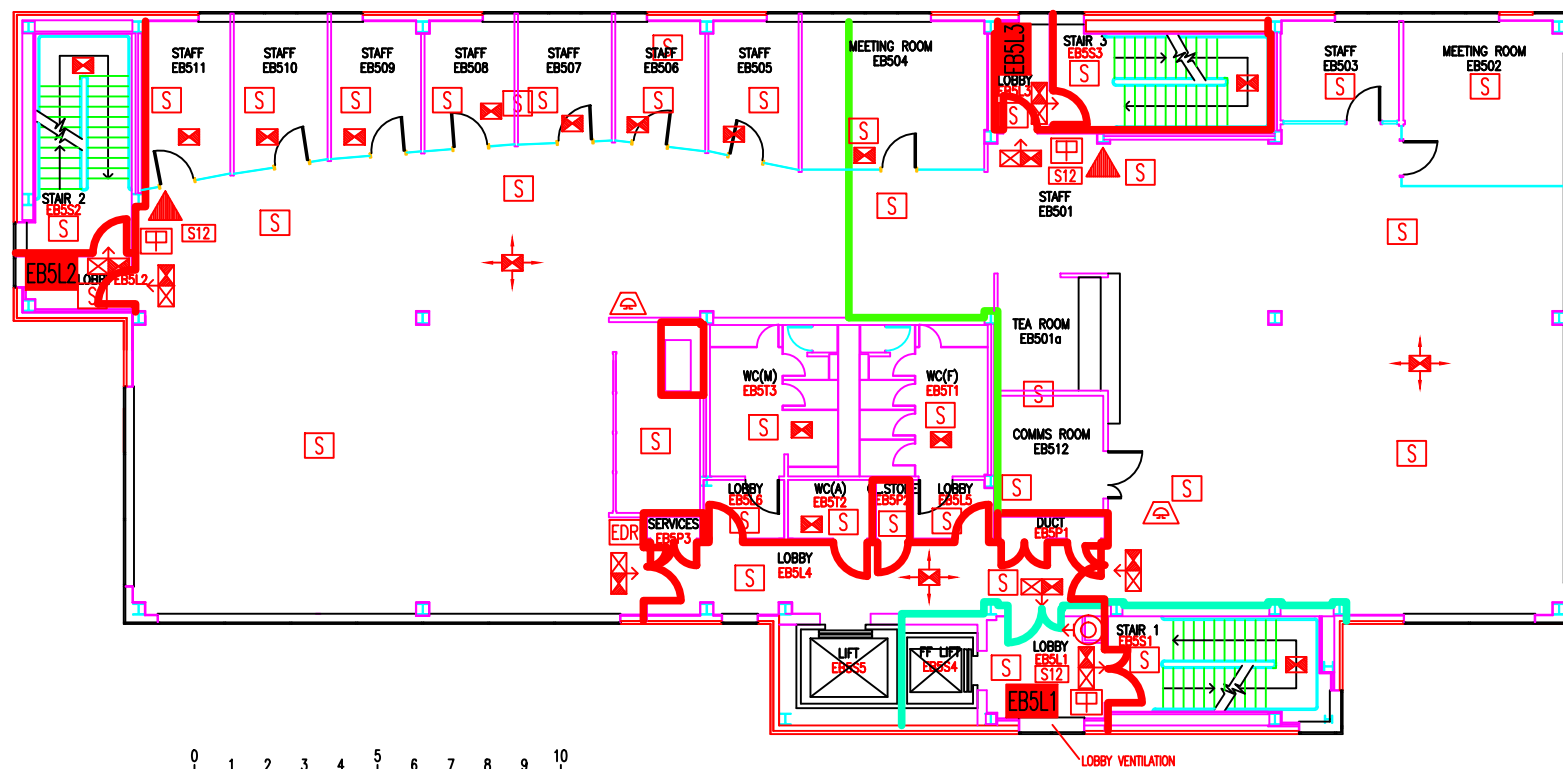


| DATE | REVISION |
|-----------|--|
| A 3.8.10 | PLAN UPDATED FOLLOWING WORKS TO FORM ROOMS EB404-411 |
| B 10.5.11 | PLAN UPDATED FOLLOWING WORKS TO ENLARGE EB502 |
| C 22.9.16 | EXTINGUISHER POSITIONS & TYPES UPDATED |
| D 7.5.21 | TEA ROOM NUMBERED EB501a |



THIS FIRE SAFETY PLAN IS GENERALLY BASED ON INFORMATION PROVIDED BY BU'S FIRE SAFETY OFFICER. IT IS THE RESPONSIBILITY OF ALL USERS OF THIS PLAN TO CHECK THE INFORMATION PROVIDED TO CONFIRM THE EXACT POSITIONS OF THE FIRE SAFETY EQUIPMENT, CAVITY BARRIERS ETC.

FIFTH FLOOR
FIRE EQUIPMENT
PLAN

EXECUTIVE BUSINESS
CENTRE

EB/FP/6D

SCALE 1:200 at A3
NOVEMBER 2009

- EBSL1** Existing wheelchair refuge zone
- Existing 30-minute fire resisting construction
- Existing 2-hour fire resisting partition
- Existing 30-minute fire resisting cavity barrier in ceiling & floor void
- ⊙ Existing dry riser outlet
- ⊗ Existing exit sign – internally illuminated
- ← Denotes directional arrow on existing fire exit sign
- ▲ Existing 6 litre P50 foam fire extinguisher
- ☐ Existing call point – manual
- ⊠ Existing smoke detector
- ⊠ Existing audible warning device
- ⊠ Existing emergency door release call point – manual
- ⊠ Existing fire action sign – general
- ⊠ Existing emergency lighting luminaire
- ⊠ Area covered by existing emergency lighting

