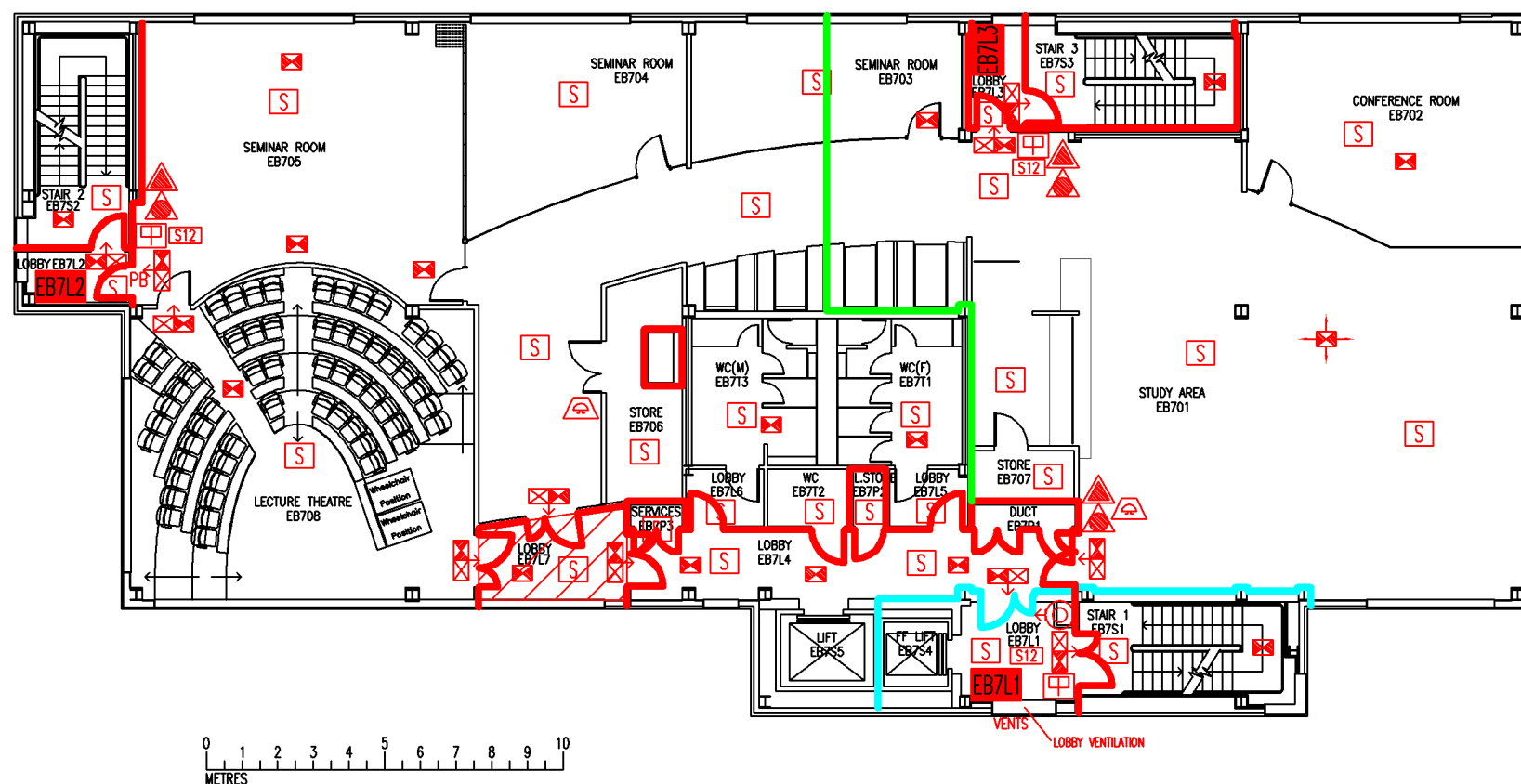


DATE	REVISION



- EB7L1 Existing wheelchair refuge zone
- Existing 30-minute fire resisting construction
- Existing 2-hour fire resisting partition
- Existing 30-minute fire resisting cavity barrier in ceiling & floor void
- S Existing fire-resisting ceiling
- Existing dry riser outlet
- S12 Existing exit sign - internally illuminated
- ← Denotes directional arrow on existing fire exit sign
- ▲ Existing CO2 fire extinguisher
- ▲ Existing foam fire extinguisher
- ☎ Existing call point - manual
- S Existing smoke detector
- 🔊 Existing audible warning device - bell
- ☒ Existing emergency lighting luminaire - self contained
- S12 Existing fire action sign - general
- PB Existing pushbar door ironmongery
- ☒ Area covered by existing emergency lighting

SEVENTH FLOOR
FIRE EQUIPMENT
PLAN

EXECUTIVE BUSINESS
CENTRE

EB/FP/8

SCALE 1:200 at A3
NOVEMBER 2009

