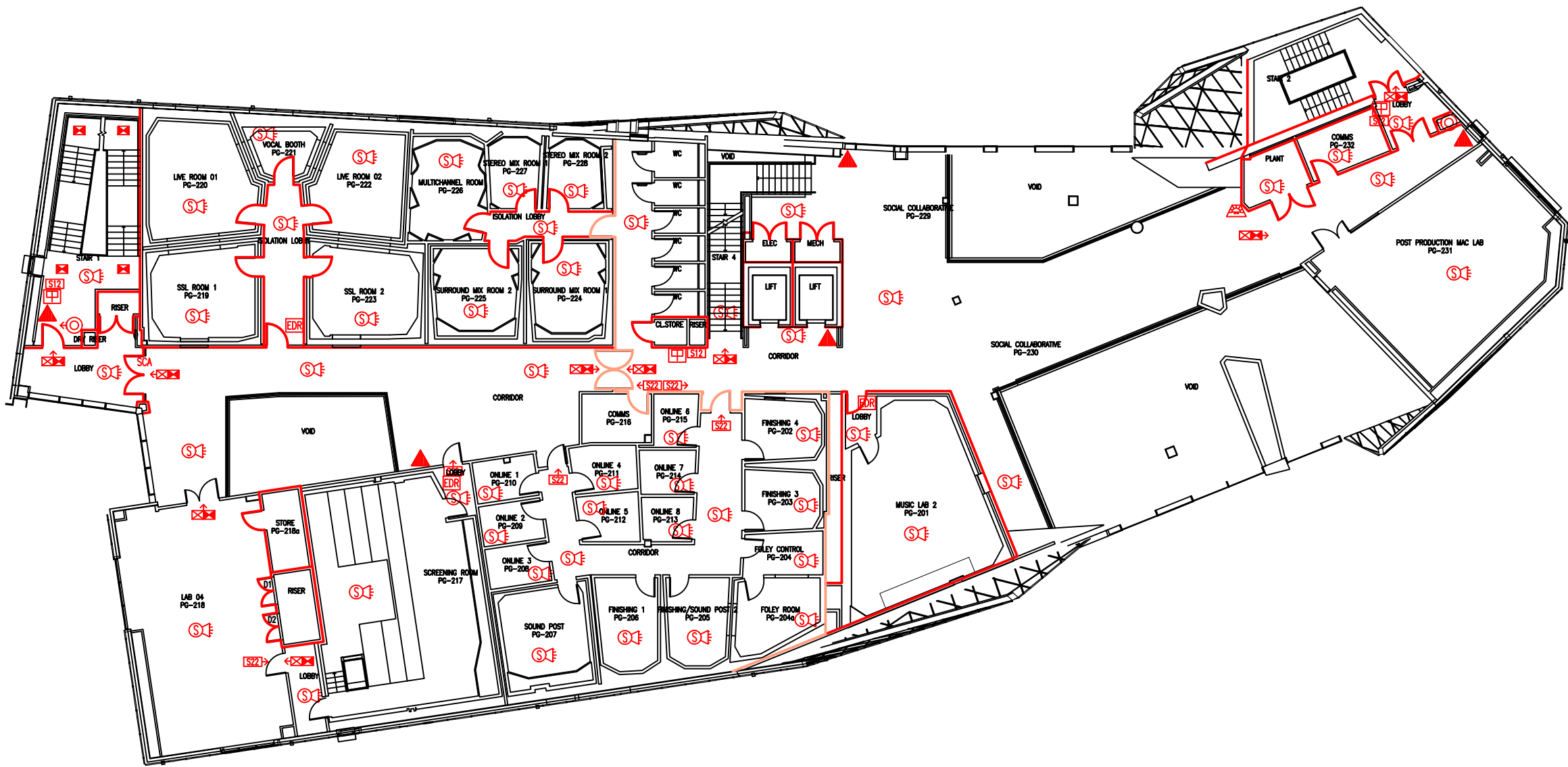


DATE	REVISION



THIS FIRE PLAN IS GENERALLY BASED ON INFORMATION PROVIDED BY ATKINS / WILLMOTT DIXON. IT IS THE RESPONSIBILITY OF ALL USERS OF THIS PLAN TO CHECK THE INFORMATION PROVIDED TO CONFIRM THE EXACT POSITIONS OF THE FIRE SAFETY EQUIPMENT, CAVITY BARRIERS ETC.

SECOND FLOOR
FIRE EQUIPMENT
PLAN

POOLE GATEWAY
BUILDING

PGB/FP/3

SCALE 1:200 at A3
JANUARY 2020

- Existing fire resisting construction – minimum 30 minutes.
- - - Existing fire resisting construction – minimum 60 minutes.
- - - Existing wheelchair refuge zone
- ⊙ Existing dry riser outlet
- EDR Existing manual emergency door release call point
- ⬆ Existing 6 litre P50 foam fire extinguisher
- ⬆ Existing manual call point
- S Existing smoke detector
- S/E Existing combined smoke detector, sounder & beacon
- ⬆ Existing internally illuminated exit sign
- ⬆ Existing fire exit sign
- ⬆ Existing emergency lighting luminaire
- S2 Existing fire action sign – general
- SCA Existing self closing automatic release

