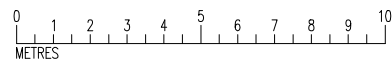
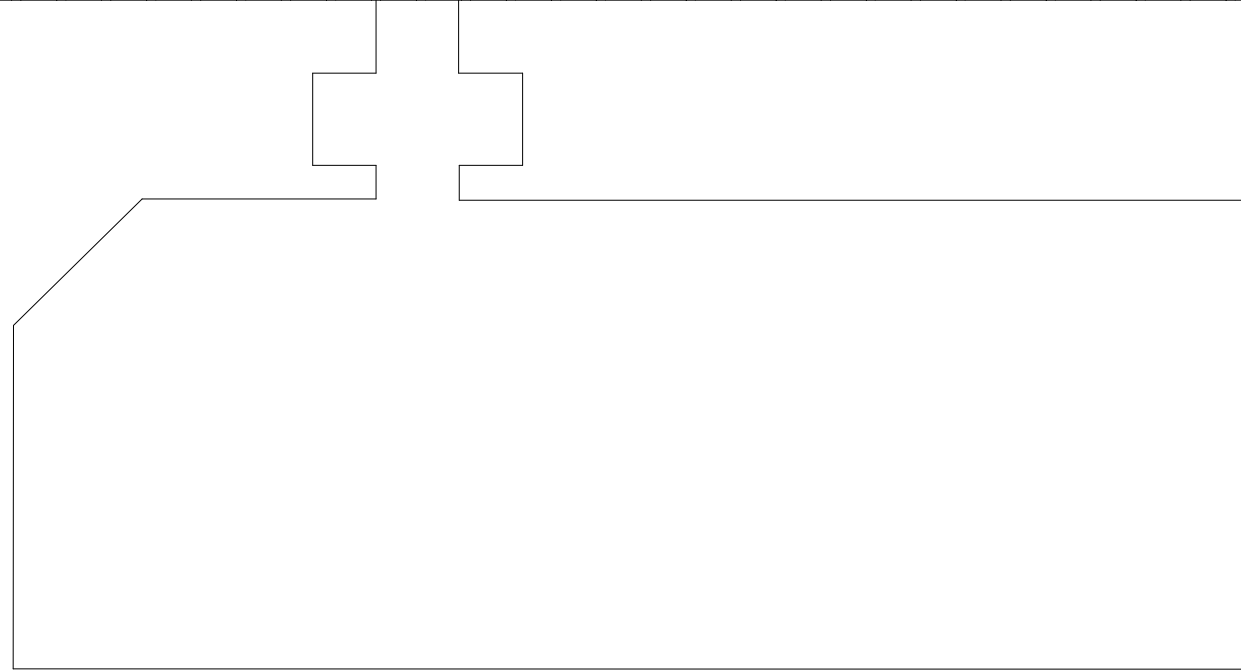
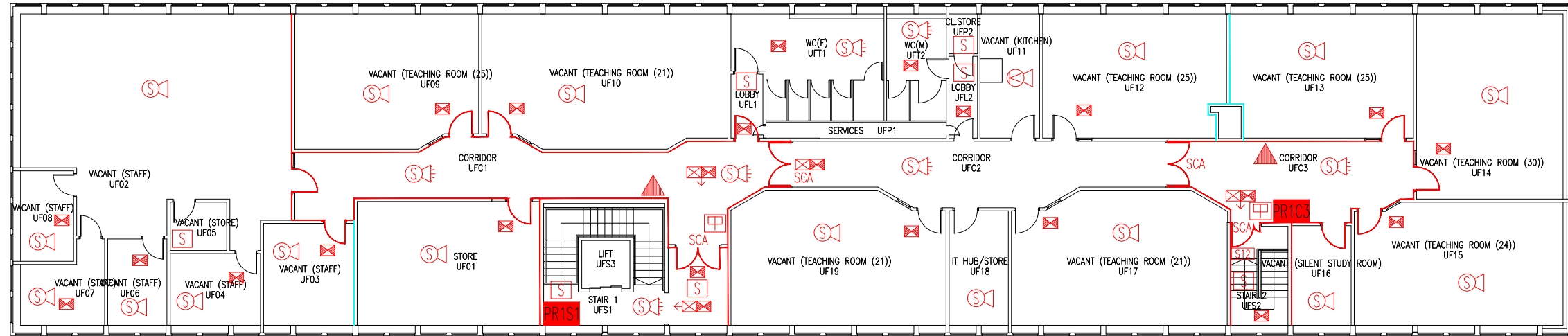


| DATE | REVISION |
|-----------|---|
| A 1.2.12 | MALE & FEMALE WCs SWAPPED & GENERAL UPDATE FOLLOWING SITE SURVEY |
| B 5.4.12 | UPDATE FOLLOWING FSO SURVEY |
| C 9.1.15 | FIRE EXTINGUISHER TYPE & POSITIONS UPDATED FOLLOWING FSO's SURVEY |
| D 3.1.16 | UF01 UPDATED TO 'STORE' |
| E 18.5.17 | VARIOUS ROOMS UPDATED TO 'VACANT' |
| F 20.8.24 | DETECTORS & CALL POINTS UPDATED |



NB1: LAYOUT BASED ON SURVEY BY NIGHTINGALE ARCHITECTS,

- Key to Fire Symbols (existing)
- Existing fire resisting construction 30 min.
 - Existing cavity barrier
 - Existing wheelchair refuge zone
 - Denotes directional arrow on existing fire exit sign
 - Existing exit sign - internally illuminated
 - Existing emergency lighting luminaire - self contained
 - Existing call point - manual
 - Existing smoke detector
 - Existing combined smoke detector & sounder
 - Existing combined smoke detector, sounder & beacon
 - Existing combined heat detector & sounder
 - Existing self closing automatic release
 - Existing 6 litre P50 fire extinguisher
 - Existing fire action sign - general

THIS FIRE SAFETY PLAN IS GENERALLY BASED ON INFORMATION PROVIDED BY BU'S FIRE SAFETY OFFICER. IT IS THE RESPONSIBILITY OF ALL USERS OF THIS PLAN TO CHECK THE INFORMATION PROVIDED TO CONFIRM THE EXACT POSITIONS OF THE FIRE SAFETY EQUIPMENT, CAVITY BARRIERS ETC.

FIRST FLOOR
FIRE PLAN

PRESTON ROAD,
YEovil

PR/FP/3F

SCALE 1:200 at A3
OCTOBER 2008

