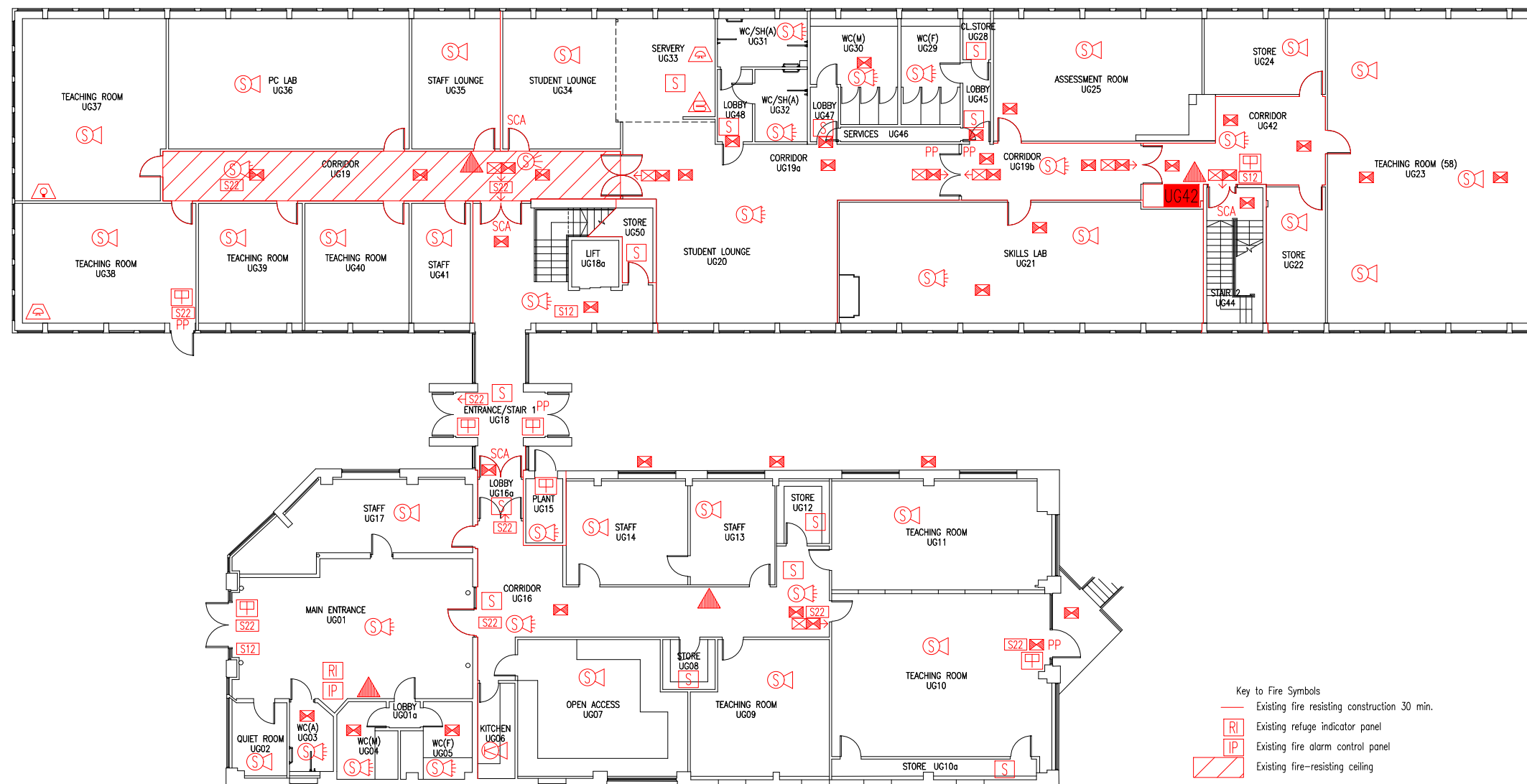


DATE	REVISION
A 4.10.07	PLAN UPDATED FOLLOWING REFURB
B 6.10.08	GENERAL UPDATE
C 1.2.12	WALL & DOOR ADDED BETWEEN UG20 & UG21. GENERAL UPDATE TO EXIT SIGNS.
D 5.4.12	UPDATED FOLLOWING FSO SURVEY
E 18.3.15	UPDATED TO SUIT FSO COMMENTS
F 8.9.15	VARIOUS ROOM NAMES CHANGED. FIRE EXTINGUISHER TYPES & POSITIONS UPDATED FOLLOWING FSO SURVEY
G 18.5.17	UG21, UG25-27 & UG33 UPDATED TO "VACANT"
H 29.7.21	UG25 UPDATED TO "STAFF". UG26 & UG27 UPDATED TO "TEACHING ROOM".
J 30.9.24	UPDATE FOLLOWING REFURBISHMENT TO ROOMS UG21-25.



THIS FIRE SAFETY PLAN IS GENERALLY BASED ON INFORMATION PROVIDED BY BU'S FIRE SAFETY OFFICER. IT IS THE RESPONSIBILITY OF ALL USERS OF THIS PLAN TO CHECK THE INFORMATION PROVIDED TO CONFIRM THE EXACT POSITIONS OF THE FIRE SAFETY EQUIPMENT, CAVITY BARRIERS ETC.

GROUND FLOOR
FIRE PLAN

PRESTON ROAD,
YEovil

PR/FP/2J

SCALE 1:200 at A3
DECEMBER 2005



- Key to Fire Symbols
- Existing fire resisting construction 30 min.
 - RI Existing refuge indicator panel
 - IP Existing fire alarm control panel
 - Existing fire-resisting ceiling
 - UG42 Existing wheelchair refuge zone
 - Existing 6 litre P50 fire extinguisher
 - Existing fire blanket
 - Existing call point - manual
 - Existing emergency lighting luminaire - self contained
 - Existing audible warning device - bell
 - Existing visual warning device
 - Existing smoke detector
 - Existing combined smoke detector & sounder
 - Existing combined smoke detector, sounder & beacon
 - Existing combined smoke detector & beacon
 - Existing heat detector
 - Existing combined heat detector & sounder
 - S12 Existing fire action sign - general
 - S22 Existing fire exit sign
 - ← Denotes directional arrow on existing fire exit sign

