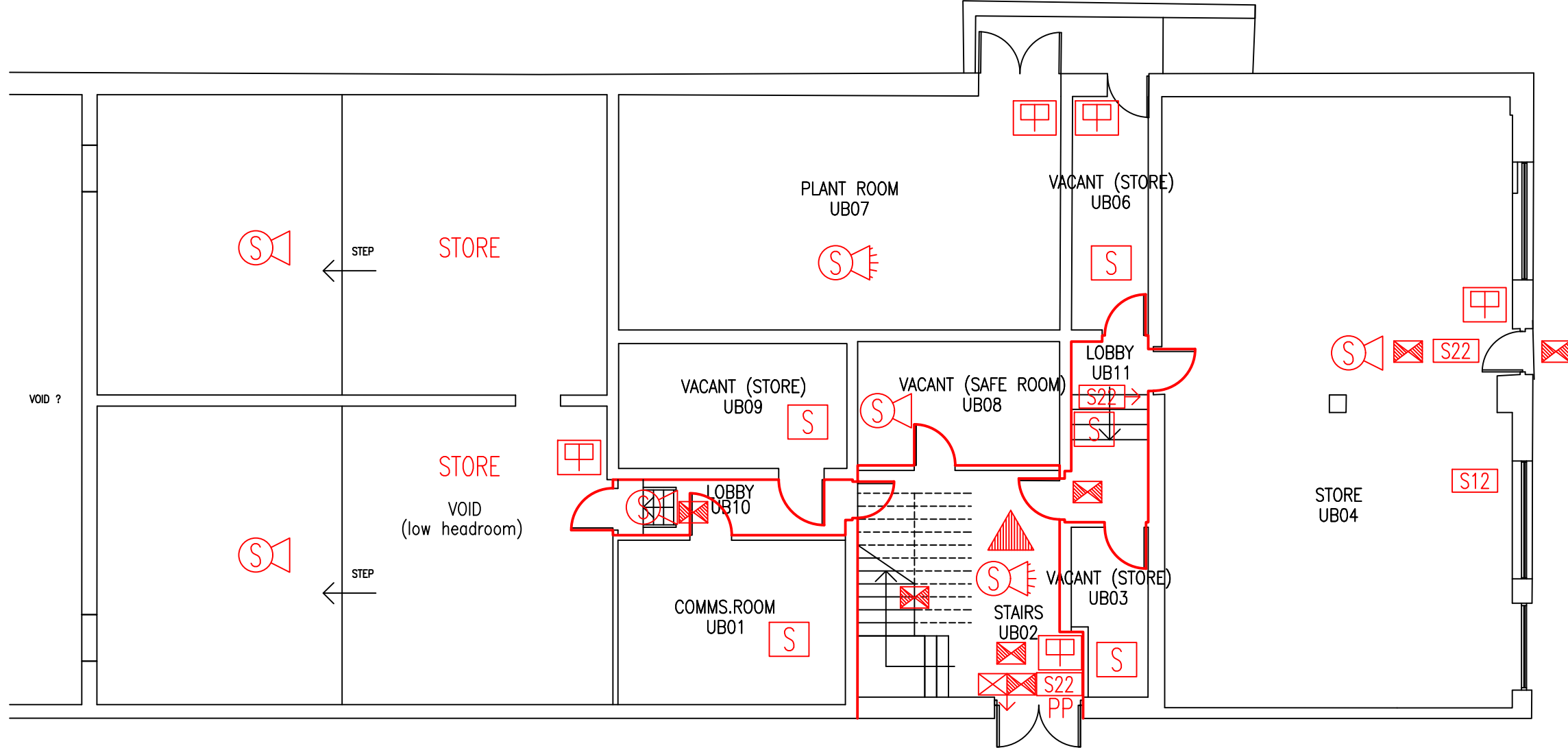


DATE	REVISION
A 22.1.09	PLAN UPDATED FOLLOWING FSO'S SURVEY
B 1.2.12	STEPS ADDED TO LOBBY OUTSIDE UB01. EXIT SIGNS UPDATED
C 4.4.12	PLAN UPDATED FOLLOWING FSO'S SURVEY
D 1.9.15	FIRE EXTINGUISHER DETAILS & POSITION UPDATED FOLLOWING FSO'S SURVEY
E 8.1.20	WALL REMOVED UB04 & ROOM UB05 REMOVED
F 20.8.24	DETECTORS & CALL POINTS UPDATED



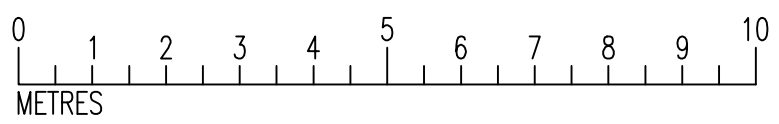
THIS FIRE SAFETY PLAN IS GENERALLY BASED ON INFORMATION PROVIDED BY BU'S FIRE SAFETY OFFICER. IT IS THE RESPONSIBILITY OF ALL USERS OF THIS PLAN TO CHECK THE INFORMATION PROVIDED TO CONFIRM THE EXACT POSITIONS OF THE FIRE SAFETY EQUIPMENT, CAVITY BARRIERS ETC.

LOWER GROUND FLOOR  
FIRE PLAN

PRESTON ROAD,  
YEOVIL

PR/FP/1F

SCALE 1:200 at A3  
DECEMBER 2005



- Key to Fire Symbols (existing)
- Existing fire resisting construction 30 min.
  - Existing 6 litre P50 fire extinguisher
  - Existing emergency lighting luminaire – self contained
  - Existing call point – manual
  - Existing smoke detector
  - Existing combined smoke detector & sounder
  - Existing combined smoke detector, sounder & beacon
  - Existing fire action sign – general
  - Existing fire exit sign
  - Existing pushpad door ironmongery
  - Existing exit sign – internally illuminated
  - Denotes directional arrow on existing fire exit sign