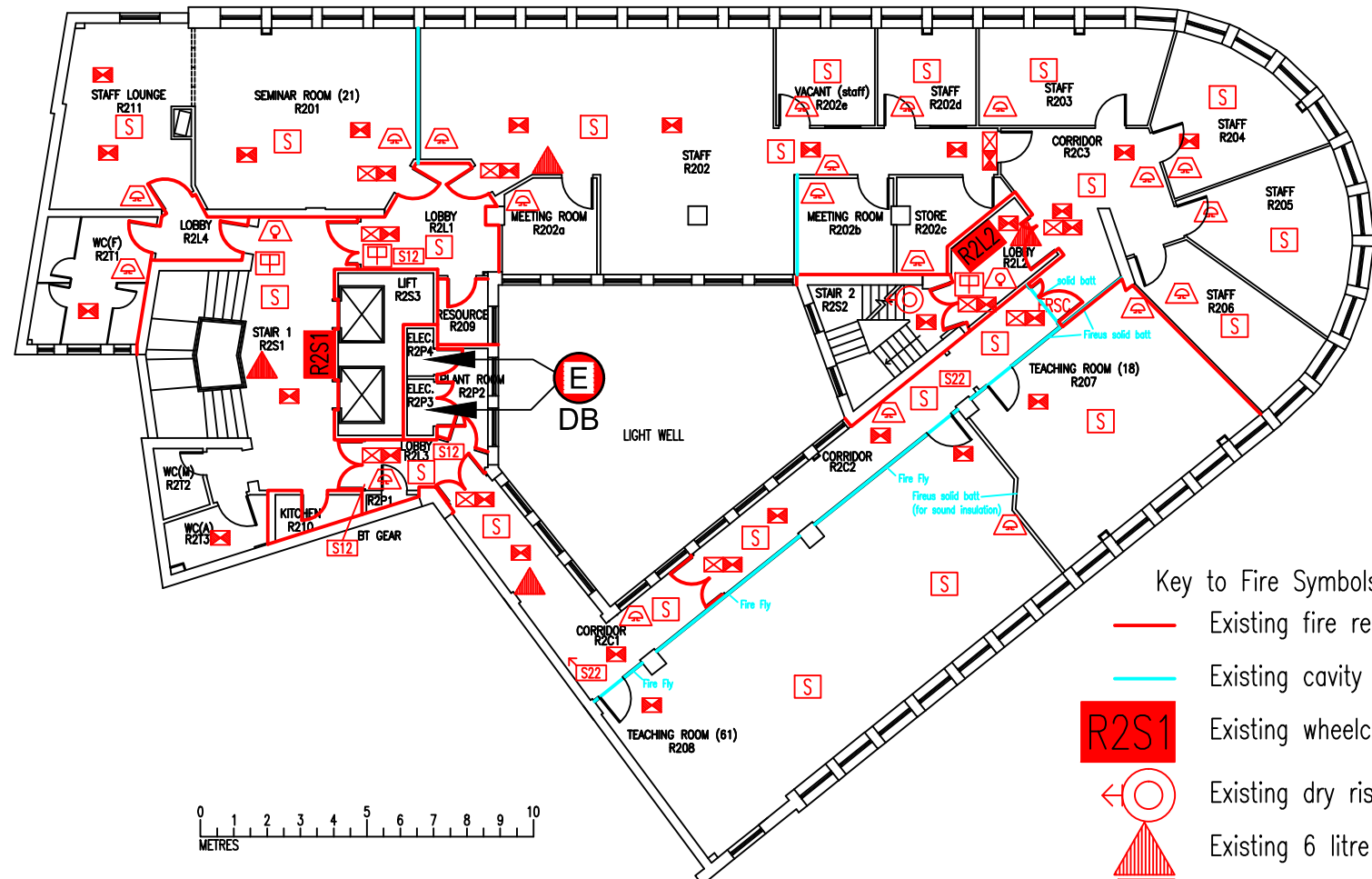


DATE	REVISION
A 15.2.11	R206 UPDATED TO SHOW CORRECT DOOR POSITION
B 11.1.12	CORRIDOR DOORS OUTSIDE R206 REPOSITIONED
C 23.3.12	R206 CHANGED FROM OFFICE TO TEACHING ROOM
D 20.9.12	R206 CAPACITY UPDATED TO 32
E 17.12.12	PART OF OPEN PLAN OFFICE R202 CONVERTED TO CELLULAR OFFICES - R202-R207 RENUMBERED TO SUIT.
F 18.7.13	DOOR REMOVED FROM BETWEEN R201 & 211, LINE OF FIRE RESISTING CONSTRUCTION CORRECTED BETWEEN R2S1 & R212 & R213.
G 29.10.13	EXISTING CAVITY BARRIER BETWEEN R201 & R202 ADDED.
H 23.9.16	EXTINGUISHER POSITIONS & TYPES UPDATED
J 18.6.18	MODS. TO R207 & R208 TO REVISE ROOM CAPACITIES.



- Key to Fire Symbols
- Existing fire resisting construction 30 min.
 - Existing cavity barrier
 - R2S1 Existing wheelchair refuge zone
 - Existing dry riser outlet
 - Existing 6 litre P50 foam fire extinguisher
 - Existing call point – manual
 - Existing audible warning device
 - Existing visual warning device
 - S Existing smoke detector
 - Existing exit sign – internally illuminated
 - Existing emergency lighting luminaire
 - S12 Existing fire action sign – general
 - S22 Existing fire exit sign
 - ← Denotes directional arrow on existing fire exit sign
 - PB Existing pushbar door ironmongery
 - FRSC Existing self closing device fitted to fire-resisting door

- Key to Existing Services Symbols :
- E Electric distribution board
 - DB

SECOND FLOOR
FIRE EQUIPMENT
PLAN

ROYAL LONDON
HOUSE

RLH/FP/2J

SCALE 1:200 at A3
SEPTEMBER 2004

