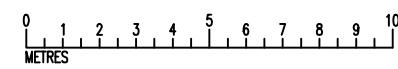
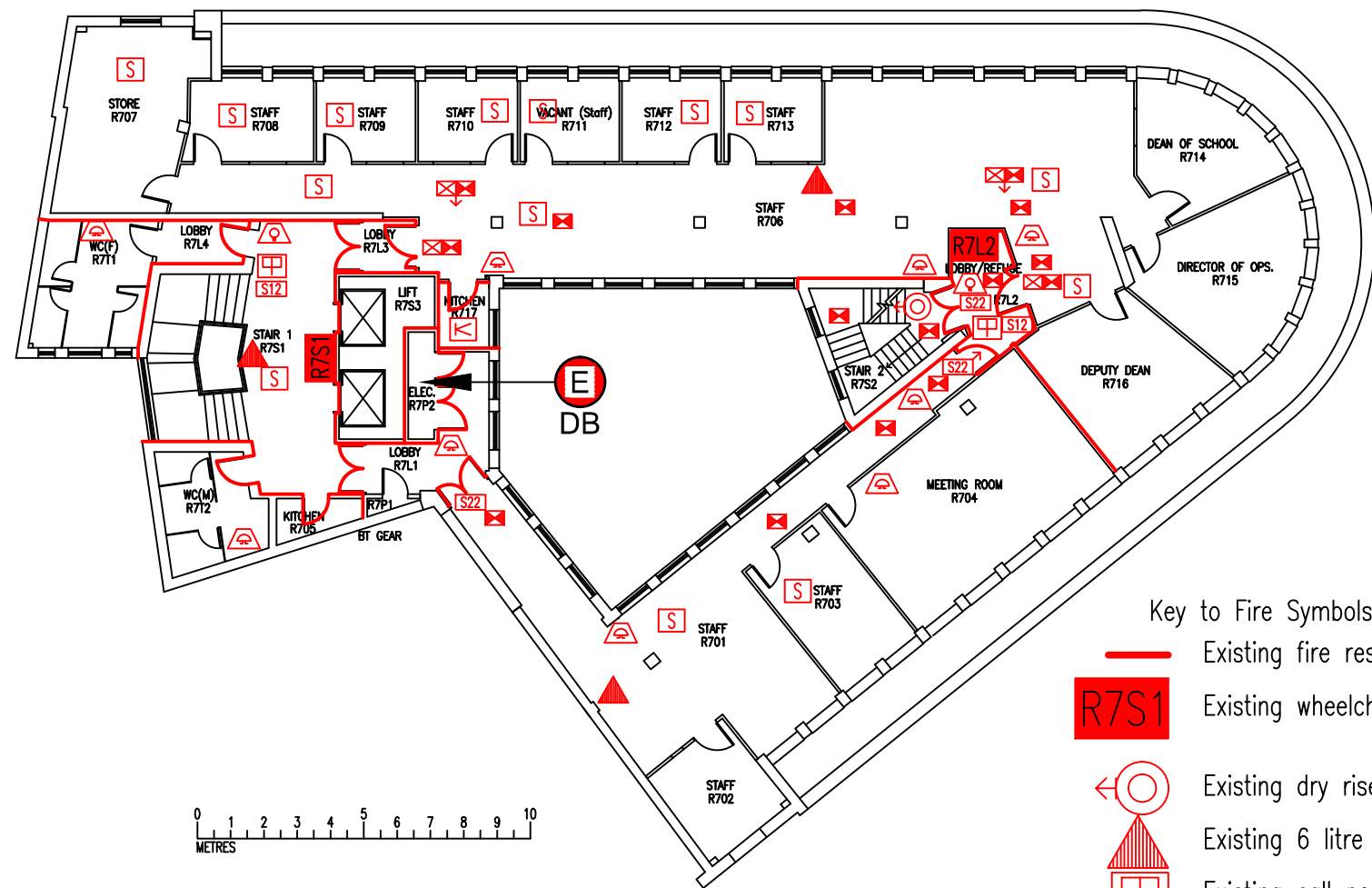


DATE	REVISION
A 23.1.13	R711 CHANGED TO RESOURCE ROOM
B 23.9.16	EXTINGUISHER POSITIONS & TYPES UPDATED
C 19.1.17	R711 CHANGED TO STAFF
D 11.12.18	R711 CHANGED TO VACANT



Key to Existing Services Symbols :

- E** Electric distribution board
- DB

Key to Fire Symbols

- Existing fire resisting construction 30 min.
- R7S1** Existing wheelchair refuge zone
- Existing dry riser outlet
- Existing 6 litre P50 foam fire extinguisher
- Existing call point – manual
- Existing audible warning device
- Existing visual warning device
- Existing smoke detector
- Existing heat detector
- Existing exit sign – internally illuminated
- Existing emergency lighting luminaire
- Existing fire action sign – general
- Existing fire exit sign
- Denotes directional arrow on existing fire exit sign

THIS FIRE SAFETY PLAN IS GENERALLY BASED ON INFORMATION PROVIDED BY BU'S FIRE SAFETY OFFICER. IT IS THE RESPONSIBILITY OF ALL USERS OF THIS PLAN TO CHECK THE INFORMATION PROVIDED TO CONFIRM THE EXACT POSITIONS OF THE FIRE SAFETY EQUIPMENT, CAVITY BARRIERS ETC.

SEVENTH FLOOR  
FIRE EQUIPMENT  
PLAN

ROYAL LONDON  
HOUSE

RLH/FP/7D

SCALE 1:200 at A3  
MAY 2010

