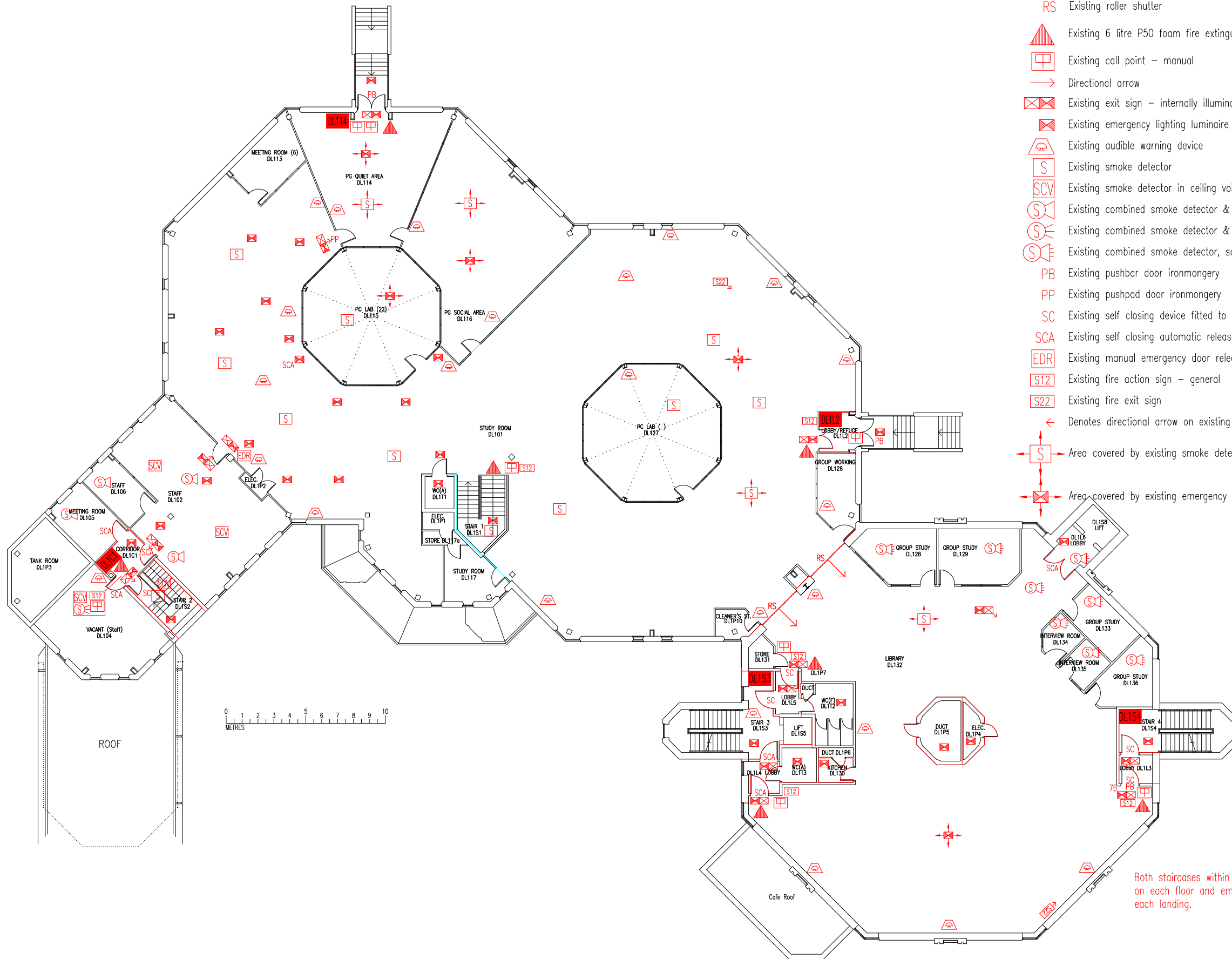


Key to Fire Symbols (existing)

- DLIC1 Existing wheelchair refuge zone
- Existing fire resisting construction 30 min.
- Approximate line of cavity barrier
- 75 Fire resistance in minutes
- RS Existing roller shutter
- Existing 6 litre P50 foam fire extinguisher
- Existing call point – manual
- Directional arrow
- Existing exit sign – internally illuminated
- Existing emergency lighting luminaire
- Existing audible warning device
- Existing smoke detector
- Existing smoke detector in ceiling void with remote indica
- Existing combined smoke detector & sounder
- Existing combined smoke detector & beacon
- Existing combined smoke detector, sounder & beacon
- PB Existing pushbar door ironmongery
- PP Existing pushpad door ironmongery
- SC Existing self closing device fitted to door
- SCA Existing self closing automatic release
- EDR Existing manual emergency door release call point
- S12 Existing fire action sign – general
- S22 Existing fire exit sign
- Denotes directional arrow on existing fire exit sign

- Area covered by existing smoke detection
- Area covered by existing emergency lighting



Both staircases within extension have refuge on each floor and emergency lighting on each landing.

DATE	REVISION
A 17.10.05	DL124 BOTH CONVERTED INTO TWO ROOMS
B 29.3.10	PLAN UPDATED FOLLOWING FSO'S SURVEY
C 28.2.11	PLAN UPDATED FOLLOWING ALTERATIONS & REFURBISHMENT WORKS FOR SAS & STAFF DEVELOPMENT.
D 23.8.12	PLAN UPDATED FOLLOWING FSO'S SURVEY
E 14.12.12	PLAN UPDATED FOLLOWING ALTERATIONS TO DL113 & DL113a.
F 13.3.13	WHOLE FLOOR OF SIR MICHAEL COBHAM LIBRARY COMBINED ON ONE PLAN, DRAWING TITLE UPDATED TO SUIT.
G 13.1.14	DL119 RENUMBERED TO DL126. DL115 UPDATED TO 'THE OCTAGON'
H 28.10.14	PLAN UPDATED FOLLOWING WORKS TO ENLARGE STUDY SPACE DL101
J 23.9.16	EXTINGUISHER POSITIONS & TYPES UPDATED
K 4.1.17	ROOM DL127 RENUMBERED FROM DL118
L 15.8.17	UPDATE FOLLOWING WORKS TO FORM DL102-6. DL115 CHANGED TO 'PC LAB'.
M 21.5.18	EDR ADDED IN DL101
N 13.10.23	UPDATE FOLLOWING REFURBISHMENT WORKS TO FORM 'GROUP STUDY ROOMS'.
O 9.1.24	NEW LIFT & LOBBY ADDED.

THIS FIRE SAFETY PLAN IS GENERALLY BASED ON INFORMATION PROVIDED BY BU'S FIRE SAFETY OFFICER. IT IS THE RESPONSIBILITY OF ALL USERS OF THIS PLAN TO CHECK THE INFORMATION PROVIDED TO CONFIRM THE EXACT POSITIONS OF THE FIRE SAFETY EQUIPMENT, CAVITY BARRIERS ETC.

**FIRST FLOOR
FIRE EQUIPMENT
PLAN**

**SIR MICHAEL
COBHAM LIBRARY**

DHL/FP/20

SCALE 1:250 at A3
FEBRUARY 2004

