







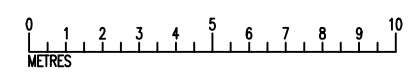
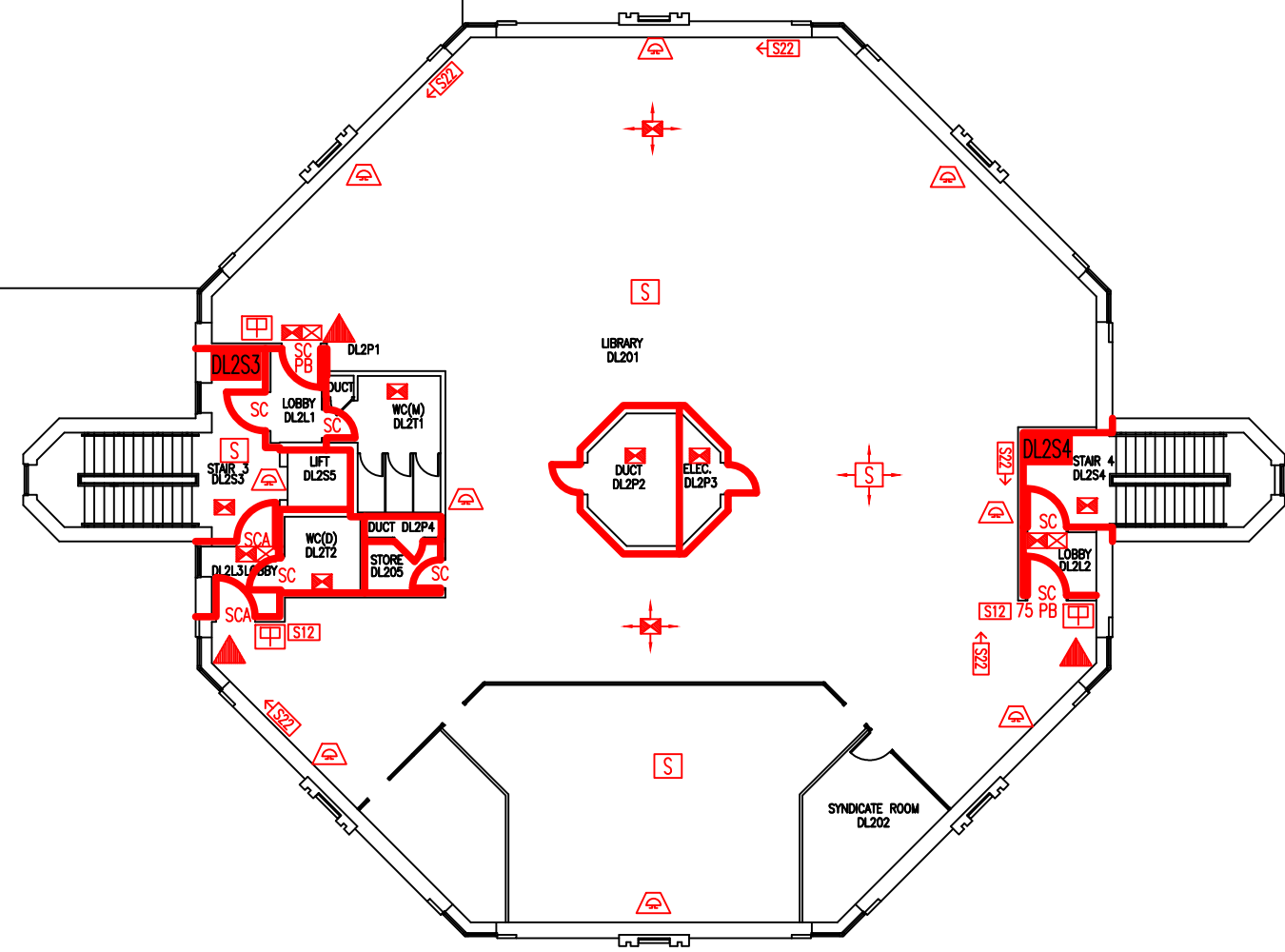


DATE	REVISION
A 29.3.10	PLAN UPDATED FOLLOWING FSO'S SURVEY
B 22.8.12	PLAN UPDATED FOLLOWING FSO'S SURVEY
C 20.12.12	DOOR TO D204 REMOVED.
D 13.3.13	WHOLE FLOOR OF SIR MICHAEL COBHAM LIBRARY COMBINED ON SINGLE PLAN, EXTENSION ORIENTATION & DRAWING TITLE CHANGED TO SUIT.
E 23.9.16	EXTINGUISHER POSITIONS & TYPES UPDATED
F 22.12.16	PLAN UPDATED FOLLOWING REMOVAL OF DOORS TO INNER ROOM

Key to Fire Symbols

- DL2S3 Existing wheelchair refuge zone
- Existing fire resisting construction 30 min.
- 75 Fire resistance in minutes
-  Existing 6 litre P50 foam fire extinguisher
-  Existing call point - manual
-  Existing exit sign - internally illuminated
- S22 Existing fire exit sign
-  Denotes directional arrow on existing fire exit sign
-  Existing emergency lighting luminaire
-  Existing audible warning device
- S Existing smoke detector
- PB Existing pushbar door ironmongery
- SC Existing self closing device fitted to door
- SCA Existing self closing automatic release
- S12 Existing fire action sign - general
-  Area covered by existing emergency lighting
-  Area covered by existing smoke detection

Approx. roof outline of two storey section of library.



SECOND FLOOR  
FIRE EQUIPMENT  
PLAN

SIR MICHAEL  
COBHAM LIBRARY

DHL/FP/3F

SCALE 1:200 at A3  
FEBRUARY 2004

