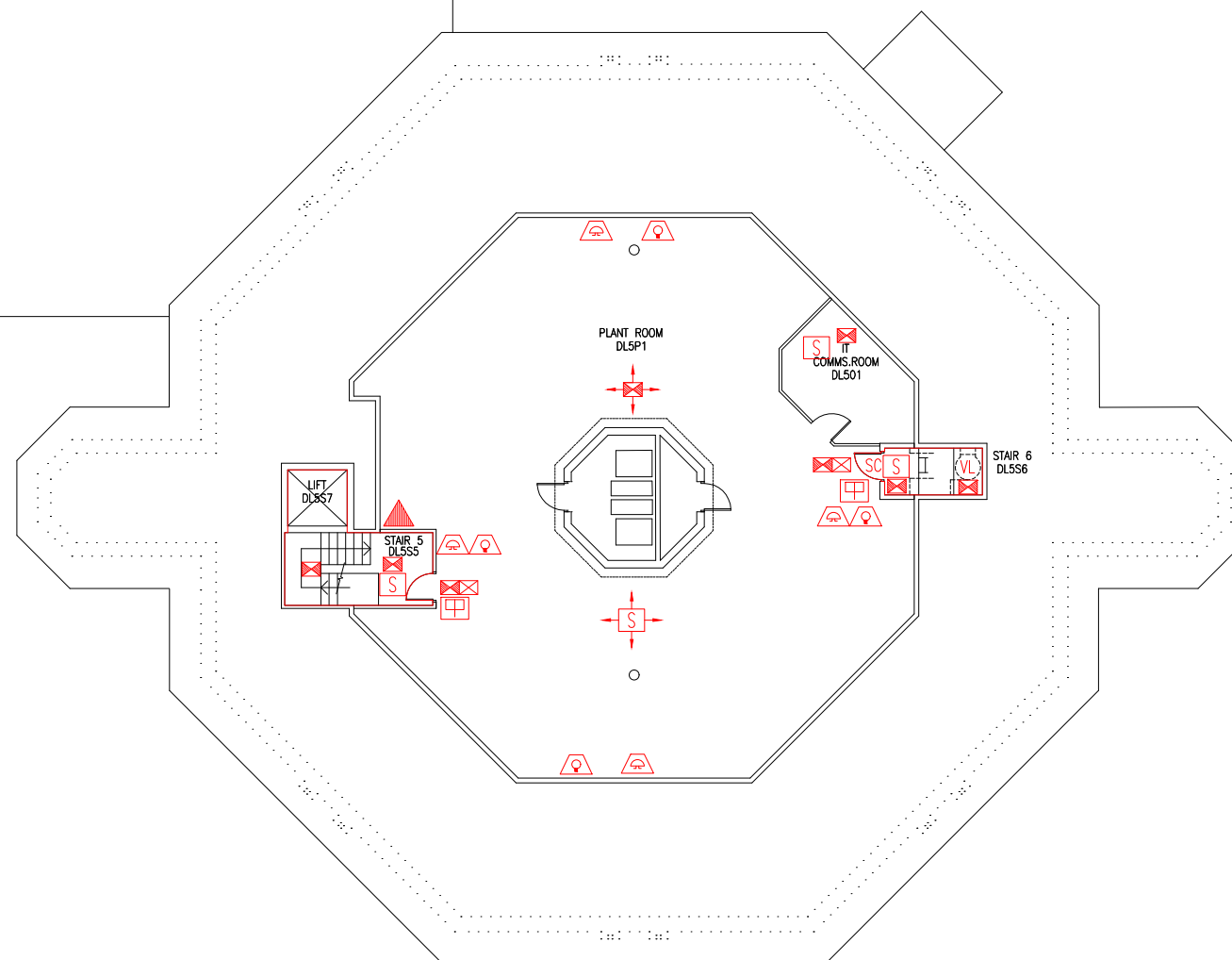


DATE	REVISION
A 14.3.13	WHOLE OF SMC LIBRARY FLOOR COMBINED ON ONE PLAN, ORIENTATION OF EXTENSION, & DRAWING TITLE REVISED TO SUIT.
B 23.9.16	EXTINGUISHER POSITIONS & TYPES UPDATED
C 9.1.24	ROOF OF NEW LIFT ADDED.

- Key to Fire Symbols
- Existing fire resisting construction 30 min.
 - ▲ Existing 6 litre P50 foam fire extinguisher
 - ☐ Existing call point – manual
 - ☒ Existing exit sign – internally illuminated
 - Ⓜ Existing emergency lighting luminaire
 - Ⓜ Existing audible warning device
 - Ⓜ Existing visual warning device
 - Ⓜ Existing smoke detector
 - SC Existing self closing device fitted to door
 - VL Vertical ladder
 - ☒ Area covered by existing emergency lighting
 - ☒ Area covered by existing smoke detection



THIS FIRE SAFETY PLAN IS GENERALLY BASED ON INFORMATION PROVIDED BY BU'S FIRE SAFETY OFFICER. IT IS THE RESPONSIBILITY OF ALL USERS OF THIS PLAN TO CHECK THE INFORMATION PROVIDED TO CONFIRM THE EXACT POSITIONS OF THE FIRE SAFETY EQUIPMENT, CAVITY BARRIERS ETC.

FIFTH FLOOR
FIRE EQUIPMENT
PLAN

SIR MICHAEL
COBHAM LIBRARY

DHL/FP/6C

SCALE 1:200 at A3
FEBRUARY 2004

