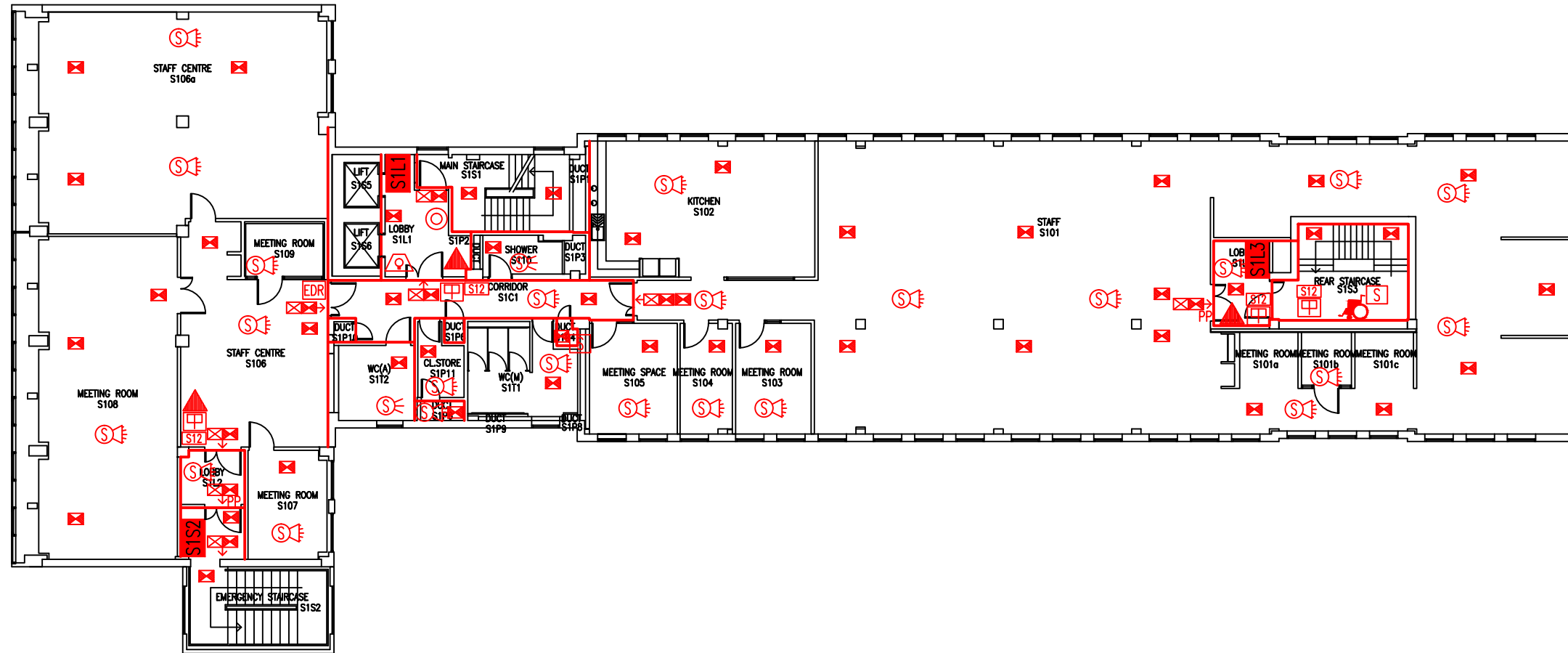


DATE	REVISION
A 30.8.06	CROSS-CORRIDOR DOORS AMENDED TO AS EXISTING ON SITE
B 1 AUG.08	PLAN UPDATED FOLLOWING FORMATION OF PC LABS FORMATION OF IT OPEN ACCESS AREA, REFORM. OF OTHER ROOMS FOR ITS, EMERGENCY STAIRCASE DOORS UPGRADED
C 1 AUG.09	PARTITION & DOOR UPGRADED BETWEEN LIFT LOBBY & STAIR 1
D 28.9.10	GENERAL UPDATE FOLLOWING FSO SURVEY
E 17.12.14	S108-S113 ROOM DESCRIPTIONS UPDATED
F 19.6.15	ROOMS S110-112 COMBINED TO FORM LARGER 'TEST LAB'
G 19.5.16	UPDATE FOLLOWING OF REMOVAL OF ROOM S116 TO INCREASE SIZE OF S115
H 26.9.16	EXTINGUISHER POSITIONS & TYPES UPDATED
J 8.2.19	S105 UPDATED TO "VACANT"
K 26.7.21	UPDATED FOLLOWING REFURBISHMENT



THIS FIRE SAFETY PLAN IS GENERALLY BASED ON INFORMATION PROVIDED BY BU'S FIRE SAFETY OFFICER. IT IS THE RESPONSIBILITY OF ALL USERS OF THIS PLAN TO CHECK THE INFORMATION PROVIDED TO CONFIRM THE EXACT POSITIONS OF THE FIRE SAFETY EQUIPMENT, CAVITY BARRIERS ETC.

FIRST FLOOR
FIRE PLAN

STUDLAND HOUSE

SH/FP/3K

SCALE 1:200 at A3
SEPTEMBER 2004

- Key to Fire Symbols
- Existing Evac chair
 - Existing fire resisting construction 30 min.
 - Existing wheelchair refuge zone
 - Existing manual call point
 - Existing 6 litre P50 foam fire extinguisher
 - Existing exit sign - internally illuminated
 - Existing emergency lighting luminaire
 - Existing audible warning device
 - Existing visual warning device
 - Existing smoke detector
 - Existing combined smoke detector & beacon
 - Existing combined smoke detector, sander & beacon
 - Existing dry riser
 - Existing fire action sign - general
 - Existing fire exit sign
 - Denotes directional arrow on existing fire exit sign
 - Existing manual emergency door release call point
 - Existing pushpad door ironmongery

