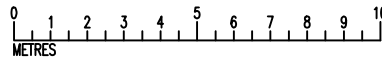
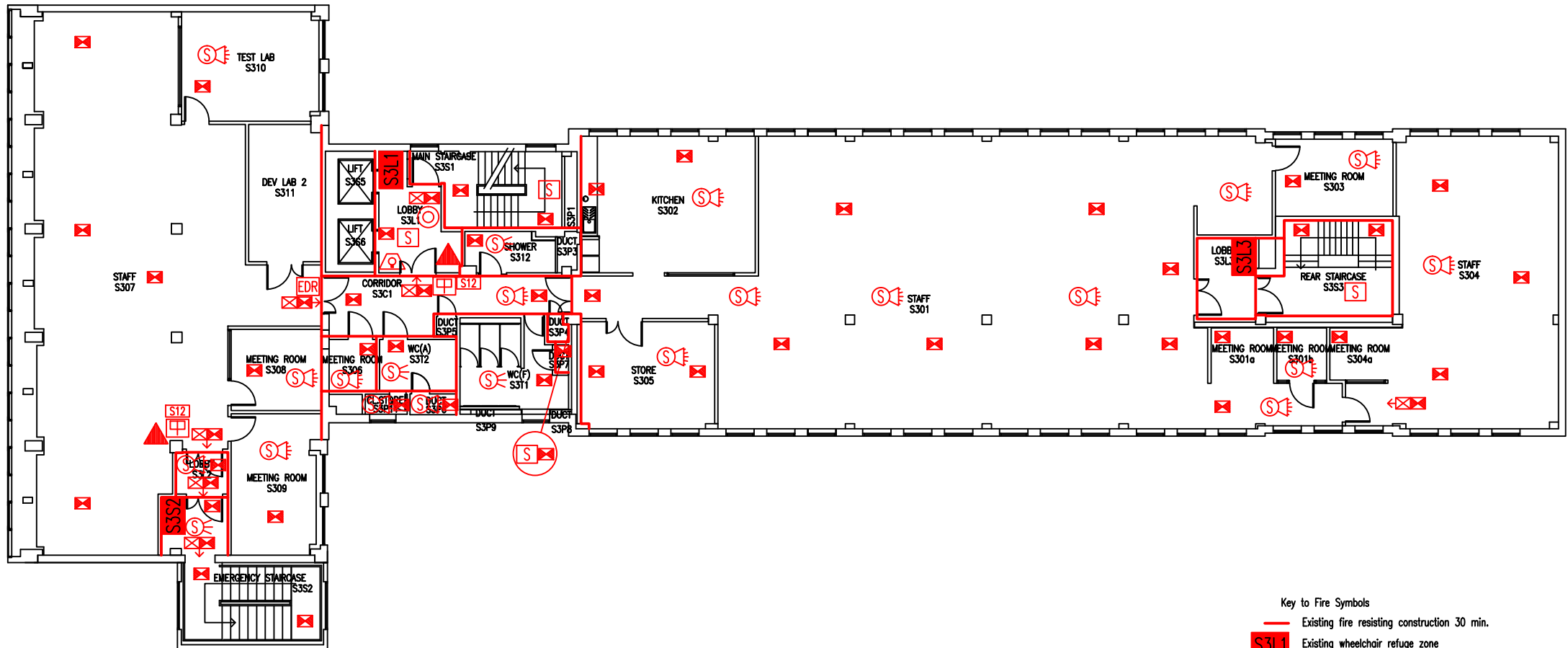


DATE	REVISION
A 11.10.05	PLAN UPDATED FOLLOWING WORKS TO FORM IHCS SKILLS ROOMS
B 25.9.06	PLAN UPDATED FOLLOWING MINOR WORKS TO S304, S305, S311 & S312
C SEPT.08	UPDATE - RECLAD, CORE & ROOMS VACATED BY ITS & SCHOLAREST
D DEC.09	UPDATE FOLLOWING WORKS FOR HSC & FSO
E 28.9.10	UPDATE FOLLOWING FSO SURVEY
F 1.2.12	S310 CHANGED TO 'STORE' FOLLOWING HSC SURVEY RETURN
G 27.9.12	GAS CYLINDERS ADDED IN S303. CO2 & BLANKET ADDED IN S313b. SCA ADDED TO CORRIDOR
H 9.10.13	UPDATE FOLLOWING WORKS TO S308-309 & S311. S304 CHANGED TO SKILLS ROOM
J 6.1.14	S306 UPDATED TO 'STORE'
K 2.9.14	S304-6 UPDATED TO FORM HSC SKILLS ROOM FACILITY
L 14.4.15	S303 & S311 UPDATED TO HAVE DOUBLE DOORS
M 8.1.16	S307 UPDATED TO 'STORE'
N 26.9.16	EXTINGUISHER POSITIONS & TYPES UPDATED
P 13.12.18	S308 UPDATED TO 'STORE'
Q 26.7.21	UPDATED FOLLOWING REFURBISHMENT



- Key to Fire Symbols
- Existing fire resisting construction 30 min.
  - Existing wheelchair refuge zone
  - Existing 6 litre P50 foam fire extinguisher
  - Existing exit sign - internally illuminated
  - Existing emergency lighting luminaire
  - Existing audible warning device
  - Existing visual warning device
  - Existing smoke detector
  - Existing combined smoke detector & beacon
  - Existing combined smoke detector, sounder & beacon
  - Existing dry riser inlet
  - Existing fire action sign - general
  - Existing fire exit sign
  - Denotes directional arrow on existing fire exit sign
  - Existing manual call point
  - Existing manual emergency door release call point
  - Existing pushpad door ironmongery

THIS FIRE SAFETY PLAN IS GENERALLY BASED ON INFORMATION PROVIDED BY BU'S FIRE SAFETY OFFICER. IT IS THE RESPONSIBILITY OF ALL USERS OF THIS PLAN TO CHECK THE INFORMATION PROVIDED TO CONFIRM THE EXACT POSITIONS OF THE FIRE SAFETY EQUIPMENT, CAVITY BARRIERS ETC.

THIRD FLOOR FIRE PLAN

STUDLAND HOUSE

SH/FP/5Q

SCALE 1:200 at A3  
JANUARY 2006

