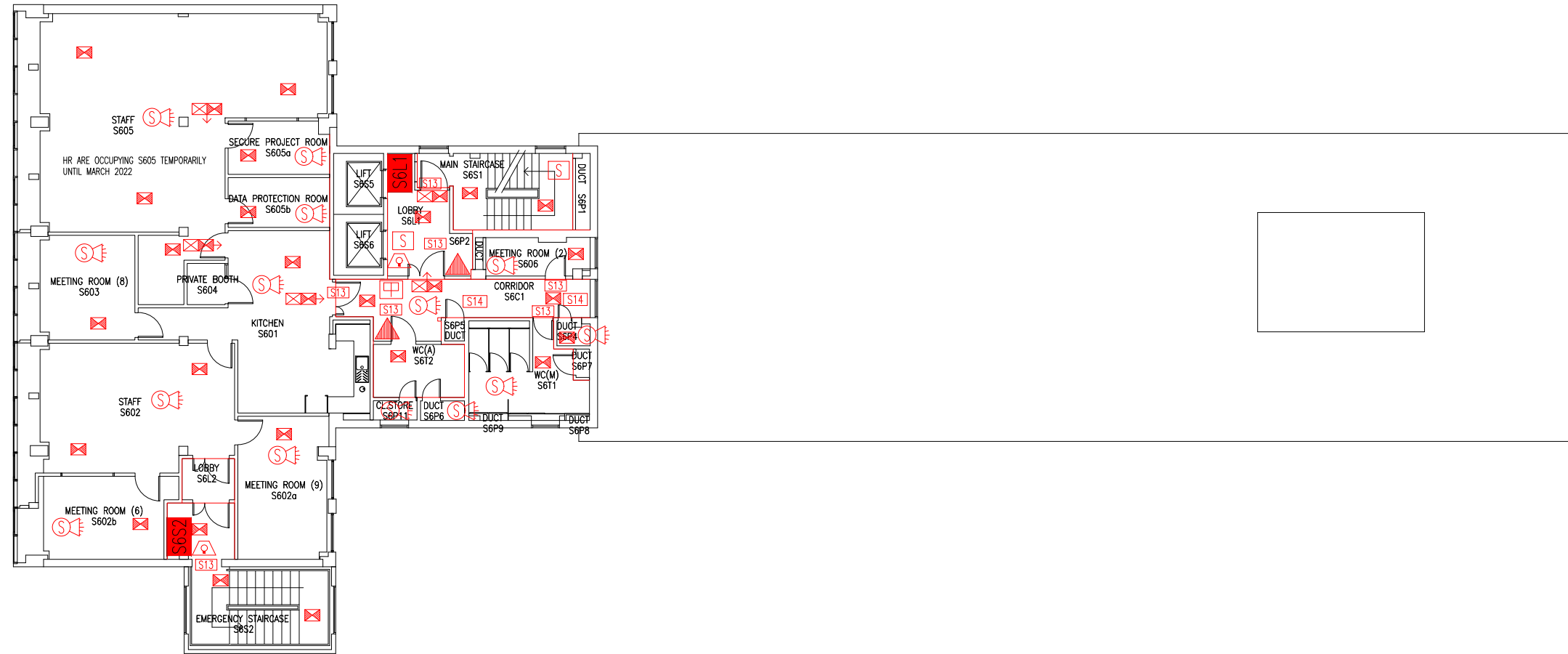


DATE	REVISION
A 30.8.06	LOBBY DOORS AMENDED TO AS EXISTING ON SITE. SMOKE DETECTORS & SOUNDERS AMENDED FOLLOWING FSO'S SURVEY
B 18.8.08	LAYOUT UPDATED FOLLOWING WORKS FOR ITS ITIG.
C AUG.09	PARTITION & DOOR UPGRADED BETWEEN LIFT LOBBY & STAIR 1
D 8.11.10	ROOMS S602 & S603 REMOVED
E 30.6.14	DEVELOPMENT LAB. RELOCATED, ROOM NUMBERS RATIONALISED.
F 26.9.16	EXTINGUISHER POSITIONS & TYPES UPDATED
G 12.3.20	ROOMS UPDATED TO "VACANT".
H 8.12.21	UPDATE FOLLOWING REFURBISHMENT.



- Key to Fire Symbols
- Existing fire resisting construction 30 min.
 - Existing wheelchair refuge zone
 - Existing call point – manual
 - Existing 6 litre P50 foam fire extinguisher
 - Existing exit sign – internally illuminated
 - Existing emergency lighting luminaire
 - Denotes directional arrow on existing fire exit sign
 - Existing audible warning device
 - Existing visual warning device
 - Existing smoke detector
 - Existing combined smoke detector, sounder & beacon
 - Existing fire action sign – general
 - Existing fire safety sign – fire door keep shut
 - Existing fire safety sign – fire door keep locked

THIS FIRE SAFETY PLAN IS GENERALLY BASED ON INFORMATION PROVIDED BY BU'S FIRE SAFETY OFFICER. IT IS THE RESPONSIBILITY OF ALL USERS OF THIS PLAN TO CHECK THE INFORMATION PROVIDED TO CONFIRM THE EXACT POSITIONS OF THE FIRE SAFETY EQUIPMENT, CAVITY BARRIERS ETC.

SIXTH FLOOR FIRE PLAN

STUDLAND HOUSE

SH/FP/8H

SCALE 1:200 at A3
SEPTEMBER 2004

