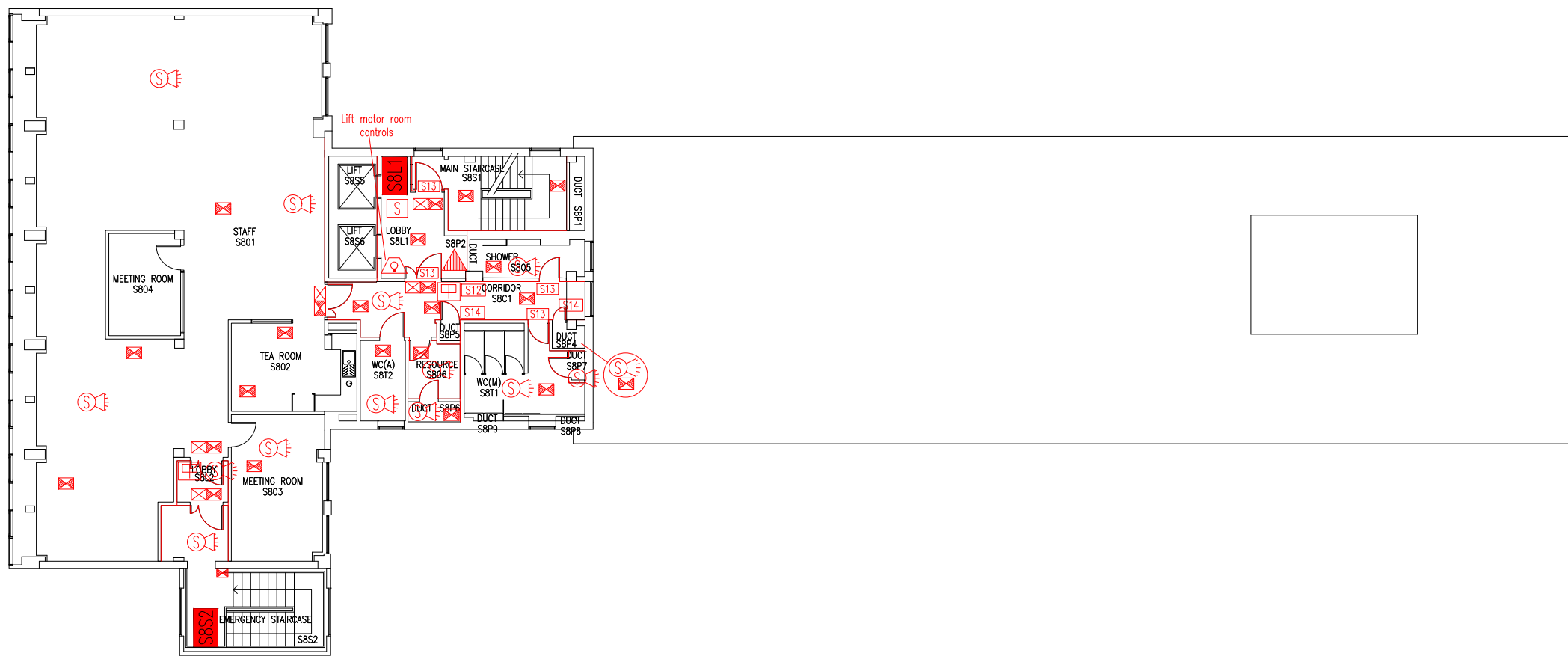


| DATE      | REVISION   |
|-----------|--|
| A 5.9.06  | CROSS-CORRIDOR DOORS AMENDED TO AS EXISTING ON SITE      |
| B 29.4.08 | UPDATE TO SUIT REFURBISHMENT FOR ITS                     |
| C AUG.09  | DOOR / PARTITION UPGRADE BETWEEN LIFT LOBBY & STAIR 1    |
| D 18.5.10 | PLAN UPDATED FOLLOWING CAPITAL WORKS TO REMOVE ROOM S804 |
| E 28.9.10 | PLAN UPDATED FOLLOWING FSD SURVEY                        |
| F 6.3.14  | S802 CHANGED FROM MEETING ROOM TO OFFICE                 |
| G 10.2.15 | S805 CHANGED FROM OFFICE TO MEETING ROOM                 |
| H 26.9.16 | EXTINGUISHER POSITIONS & TYPES UPDATED                   |
| J 9.3.22  | UPDATED FOLLOWING REFURBISHMENT.                         |



- Key to Fire Symbols
- Existing fire resisting construction 30 min.
  - Existing wheelchair refuge zone
  - Existing call point - manual
  - Existing 6 litre P50 foam fire extinguisher
  - Existing exit sign - internally illuminated
  - Existing emergency lighting luminaire
  - Existing visual warning device
  - Existing smoke detector
  - Existing combined smoke detector, sounder & beacon
  - Existing fire action sign - general
  - Existing fire safety sign - fire door keep shut
  - Existing fire safety sign - fire door keep locked

THIS FIRE SAFETY PLAN IS GENERALLY BASED ON INFORMATION PROVIDED BY BU'S FIRE SAFETY OFFICER. IT IS THE RESPONSIBILITY OF ALL USERS OF THIS PLAN TO CHECK THE INFORMATION PROVIDED TO CONFIRM THE EXACT POSITIONS OF THE FIRE SAFETY EQUIPMENT, CAVITY BARRIERS ETC.

## EIGHTH FLOOR FIRE PLAN

## STUDLAND HOUSE

SH/FP/10J

SCALE 1:200 at A3  
FEBRUARY 2006

