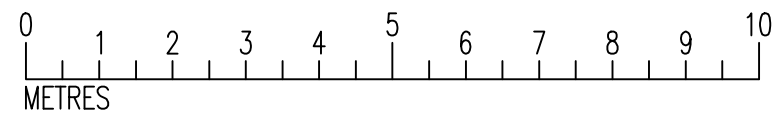
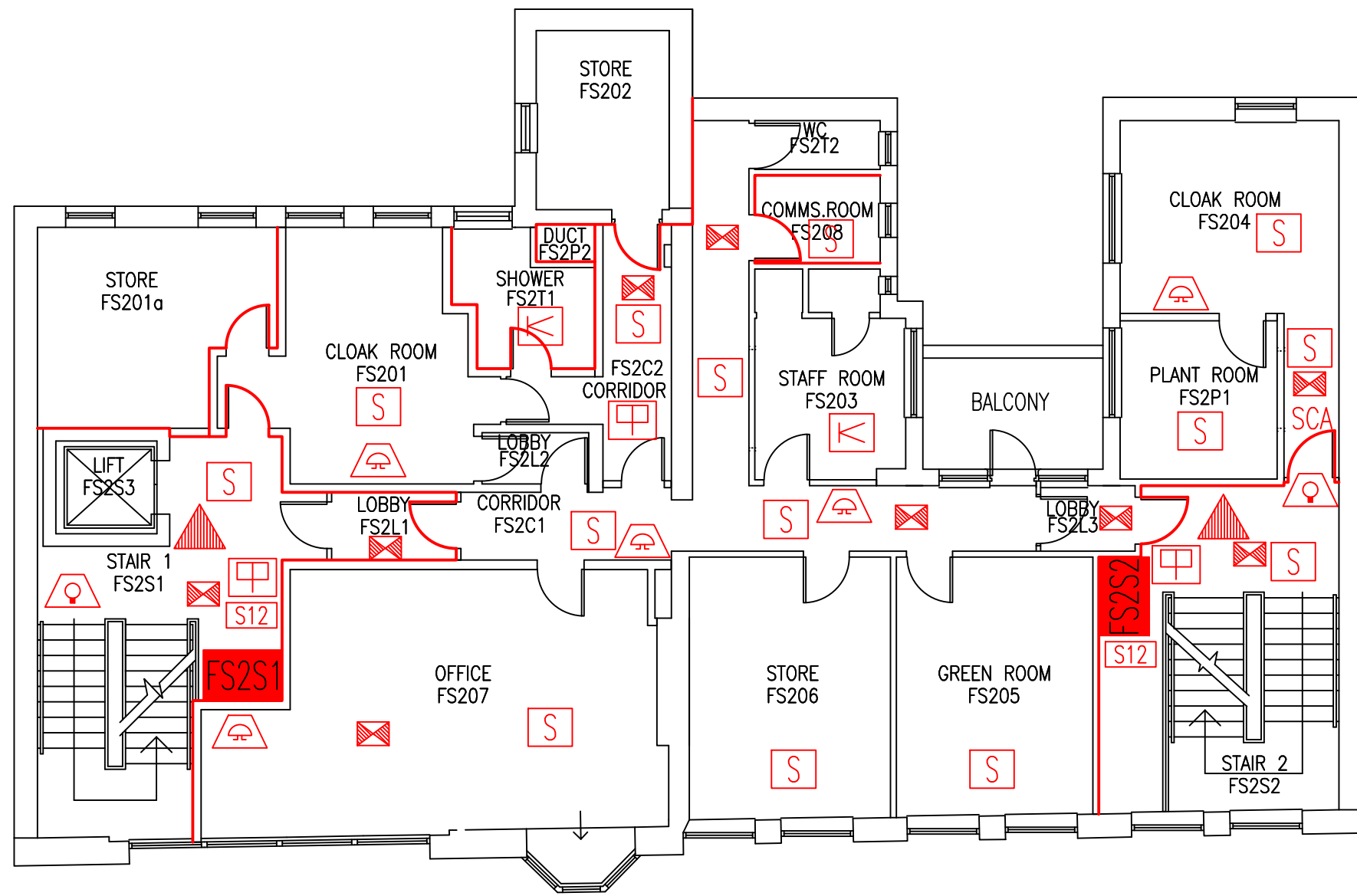


DATE	REVISION
A 7.1.08	FS205-6 AMENDED TO 'STORE' FOLLOWING SU SURVEY RETURN
B 15.4.10	PLAN UPDATED FOLLOWING FSD'S SURVEY
C 27.11.12	PLAN UPDATED FOLLOWING FSD'S SURVEY
D 26.9.16	EXTINGUISHER POSITIONS & TYPES UPDATED
E 15.12.17	FS203 UPDATED FROM 'STORE' TO 'STAFF ROOM'. FS205 UPDATED FROM 'STORE' TO 'GREEN ROOM'.



- Key to Fire Symbols
- Existing fire resisting construction 30 min.
 - Existing wheelchair refuge zone
 - Existing call point – manual
 - Existing 6 litre P50 foam fire extinguisher
 - Existing emergency lighting luminaire
 - Existing visual warning device
 - Existing audible warning device
 - Existing smoke detector
 - Existing heat detector
 - Existing fire action sign – general
 - Existing self closing automatic release

SECOND FLOOR
FIRE PLAN

THE OLD FIRE
STATION

FS/FP/3E

SCALE 1:100 at A3
17th FEBRUARY 2006

