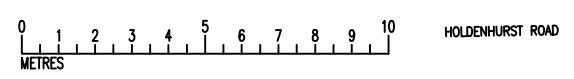
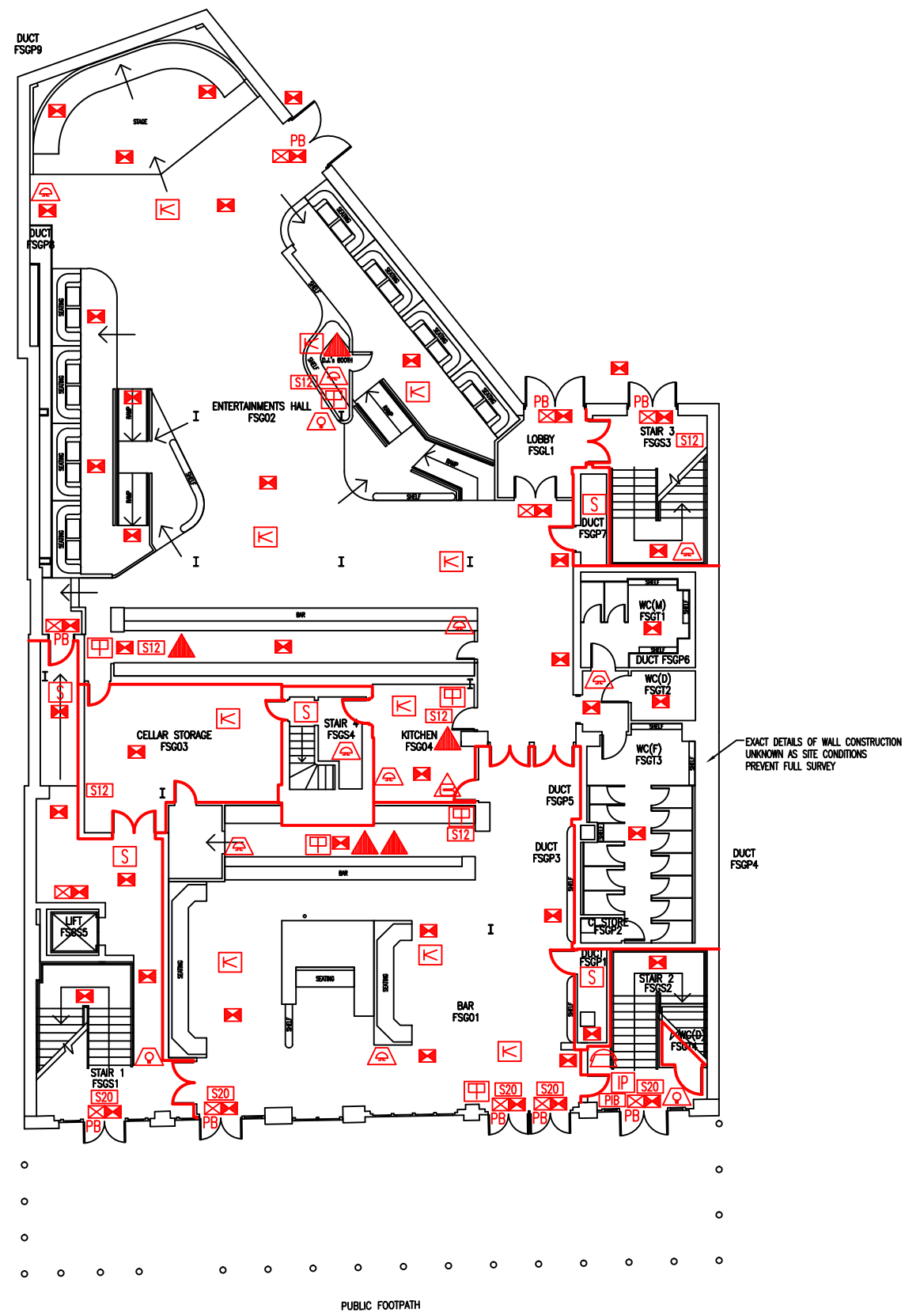


DATE	REVISION
A 18.12.06	PB ADDED TO STAIR 1 EXIT
B 19.11.09	DOOR SWING BETWEEN FSG03 & STAIR 4 UPDATED.
C 15.4.10	PLAN UPDATED FOLLOWING FSD'S SURVEY
D 15.3.12	PREMISES INFORMATION BOX ADDED
E 27.11.12	PLAN UPDATED FOLLOWING FSD'S SURVEY
F 8.1.15	PLAN UPDATED TO SHOW CALL POINTS IN FSG01 IN CORRECT POSITIONS
G 27.1.15	LINE OF EXG. FIRE BARRIERS UPDATED TO FSD COMMENTS
H 26.9.16	EXTINGUISHER POSITIONS & TYPES UPDATED



- Key to Fire Symbols
- Existing fire resisting construction 30 min.
 - Wheelchair refuge intercom master panel
 - Existing fire alarm control panel
 - Existing premises information board
 - Existing call point - manual
 - Existing 6 litre P50 foam fire extinguisher
 - Existing fire blanket
 - Existing exit sign - internally illuminated
 - Existing emergency lighting luminaire
 - Existing audible warning device
 - Existing visual warning device
 - Existing smoke detector
 - Existing heat detector
 - Existing pushbar door ironmongery
 - Existing fire action sign - general
 - Existing fire safety sign - fire escape keep clear

GROUND FLOOR
FIRE PLAN

THE OLD FIRE
STATION

FS/FP/1H

SCALE 1:200 at A3
FEBRUARY 2006

