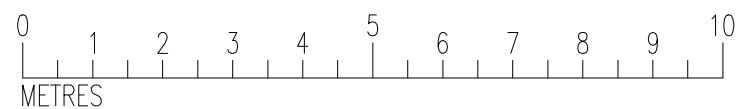
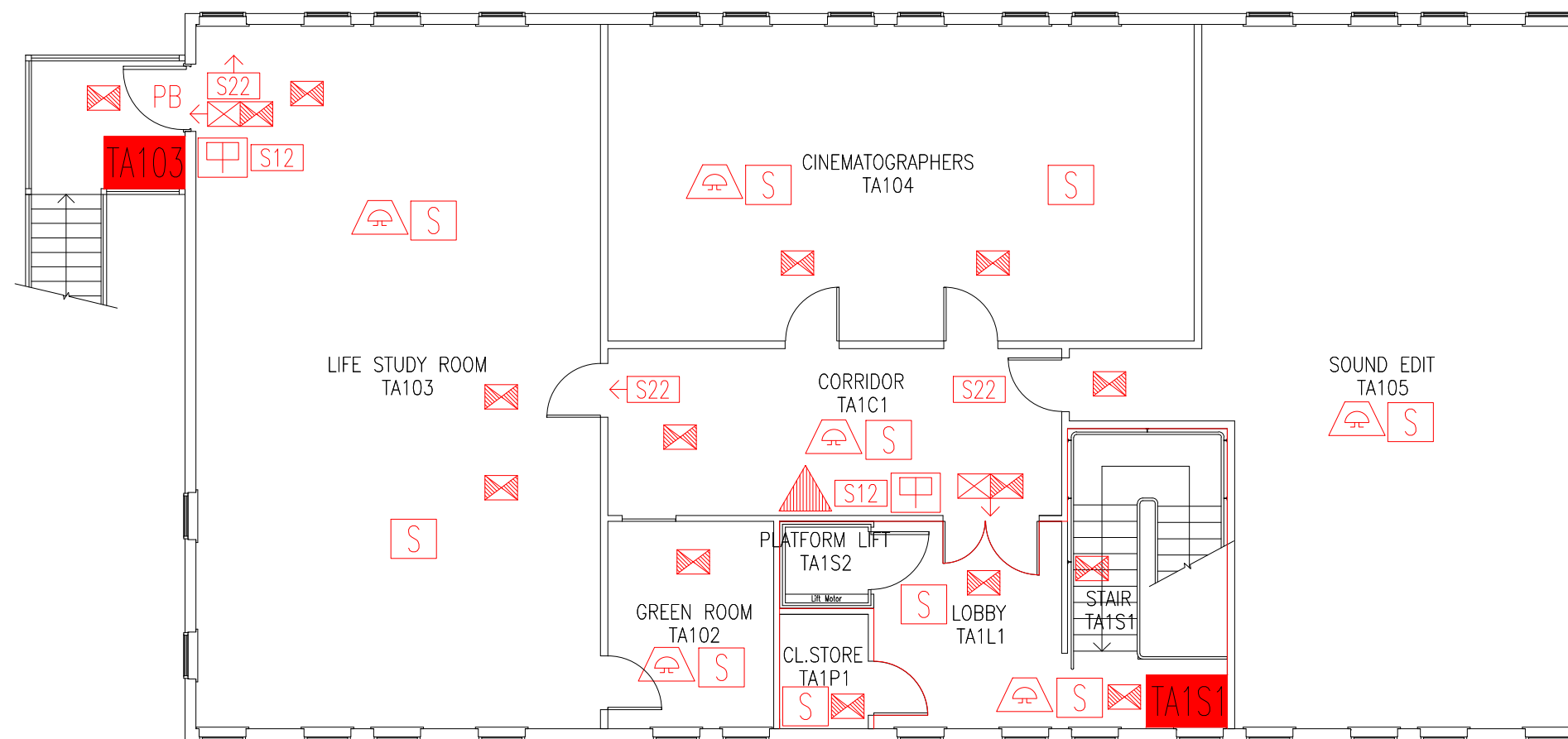


DATE	REVISION
A 17.9.12	VACANT ROOMS TA102, TA103 & TA105 ALLOCATED TO MS.
B 3.2.15	CLEANER'S STORE ADDED
C 26.9.16	EXTINGUISHER POSITIONS & TYPES UPDATED
D 7.10.24	TA102 & TA103 ROOM NAMES UPDATED



- TA1S1** Existing wheelchair refuge zone
- Existing 60 minutes fire resisting construction
- ☐ Existing call point – manual
- 🔊 Existing audible warning device
- ☐ S Existing smoke detector
- ☒ Existing internally illuminated exit sign
- ☒ Existing emergency lighting luminaire
- ☐ S12 Existing fire action sign – general
- ☐ S22 Existing fire exit sign
- ← Denotes directional arrow on existing fire exit sign
- PB Existing pushbar door ironmongery
- 🔺 Existing 6 litre P50 foam fire extinguisher

THIS FIRE SAFETY PLAN IS GENERALLY BASED ON INFORMATION PROVIDED BY BU'S FIRE SAFETY OFFICER. IT IS THE RESPONSIBILITY OF ALL USERS OF THIS PLAN TO CHECK THE INFORMATION PROVIDED TO CONFIRM THE EXACT POSITIONS OF THE FIRE SAFETY EQUIPMENT, CAVITY BARRIERS ETC.

FIRST FLOOR
FIRE PLAN

TOLPUDDLE HOUSE
ANNEXE 1

TPHA1/FP/2D

SCALE 1:100 at A3
31st AUGUST 2011

