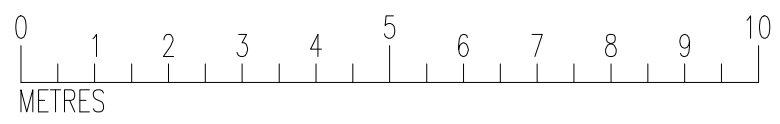
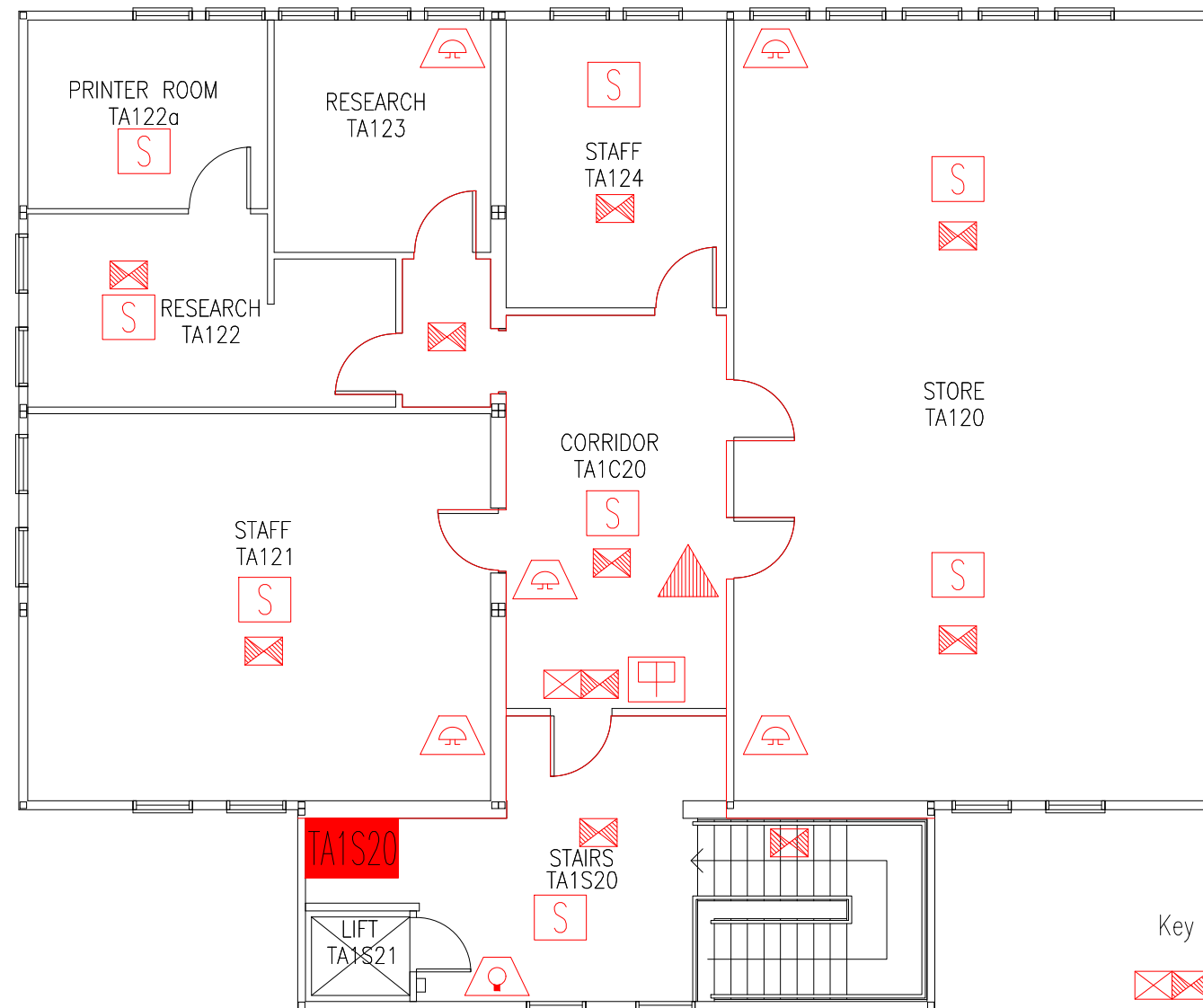


DATE	REVISION
A SEPT.09	PLAN UPDATED FOLLOWING MS MOVE TO 1ST FLOOR ROOMS
B 5.11.13	UPDATE FOLLOWING WORKS TO FORM TA122a
C 13.1.14	TA121 & TA124 CHANGED TO 'STAFF'
D 26.9.16	EXTINGUISHER POSITIONS & TYPES UPDATED
E 10.1.23	TA120 UPDATED TO 'STORE'



- Key to Fire Symbols
- Existing exit sign – internally illuminated
 - Existing emergency lighting luminaire
 - Existing call point – manual
 - Existing audible warning device
 - Existing visual warning device
 - Existing smoke detector
 - Existing 6 litre P50 foam fire extinguisher
 - Existing fire resisting construction 30 min.
 - Existing wheelchair refuge zone + intercom

THIS FIRE SAFETY PLAN IS GENERALLY BASED ON INFORMATION PROVIDED BY BU'S FIRE SAFETY OFFICER. IT IS THE RESPONSIBILITY OF ALL USERS OF THIS PLAN TO CHECK THE INFORMATION PROVIDED TO CONFIRM THE EXACT POSITIONS OF THE FIRE SAFETY EQUIPMENT, CAVITY BARRIERS ETC.

FIRST FLOOR
FIRE PLAN

TOLPUDDLE HOUSE
ANNEXE 2

TPHA2/FP/2E

SCALE 1:100 at A3
SEPTEMBER 2007

