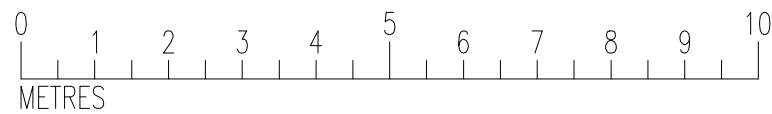
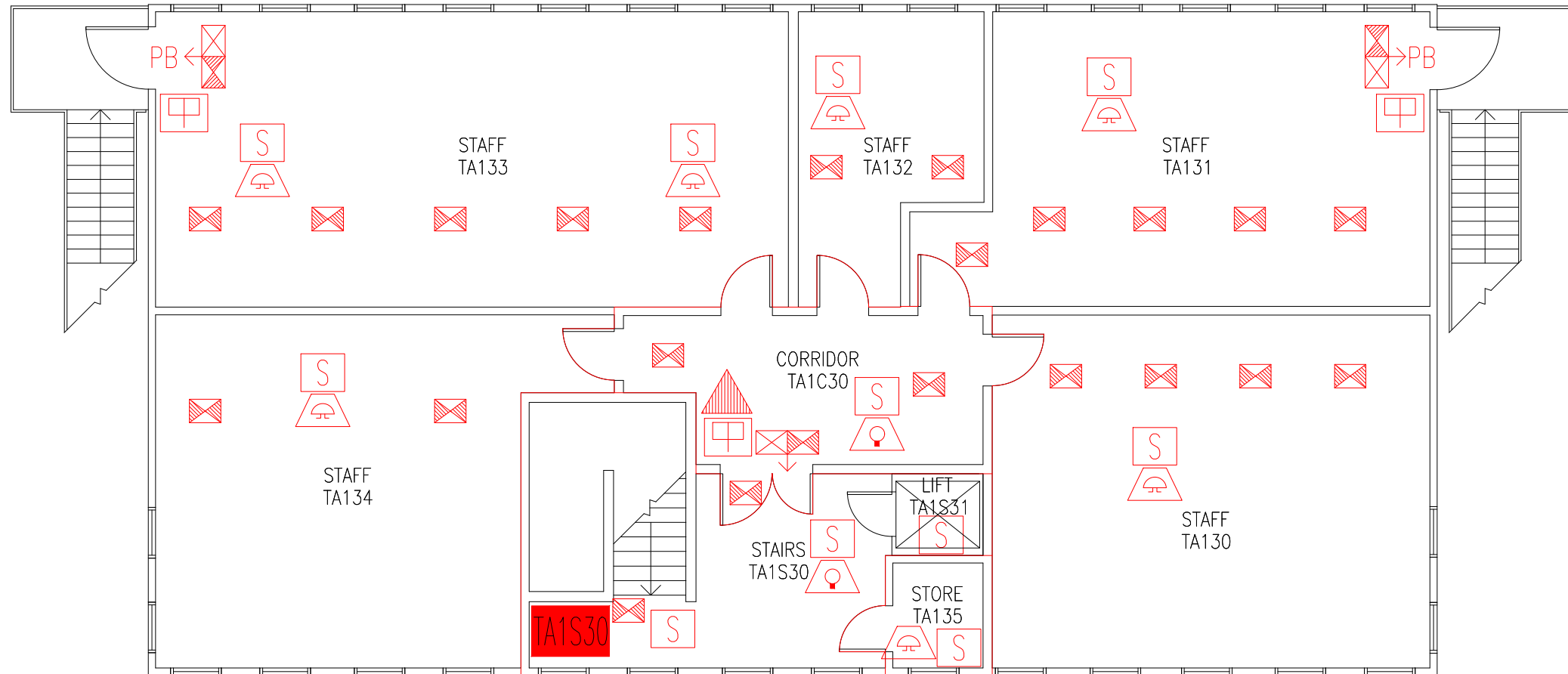


DATE	REVISION
A 26.9.16	EXTINGUISHER POSITIONS & TYPES UPDATED
B 4.1.17	TA130 CHANGED TO 'POR STUDY SPACE'
C 7.6.18	TA130 CHANGED TO 'PG BASE ROOM'
D 19.9.23	TA130-134 CHANGED TO 'SS STAFF'



- Existing wheelchair refuge zone
- Existing fire resisting construction 30 min.
- Existing 6 litre P50 foam fire extinguisher
- Existing call point – manual
- Existing smoke detector
- Existing exit sign – internally illuminated
- Existing emergency lighting luminaire
- Denotes directional arrow on existing fire exit sign
- Existing pushbar door ironmongery
- Existing audible warning device
- Existing visual warning device

THIS FIRE SAFETY PLAN IS GENERALLY BASED ON INFORMATION PROVIDED BY BU'S FIRE SAFETY OFFICER. IT IS THE RESPONSIBILITY OF ALL USERS OF THIS PLAN TO CHECK THE INFORMATION PROVIDED TO CONFIRM THE EXACT POSITIONS OF THE FIRE SAFETY EQUIPMENT, CAVITY BARRIERS ETC.

FIRST FLOOR  
FIRE PLAN

TOLPUDDLE HOUSE  
ANNEXE 3

TPHA3/FP/2D

SCALE 1:100 at A3  
26th SEPTEMBER 2013

